

AK3L1 Polyclonal Antibody

Catalog number: 13206-1-AP

Size: 77 µg/150 µl

Source: Rabbit

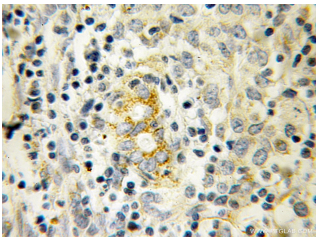
Isotype: IgG

Synonyms:

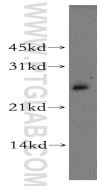
AK3L1; Adenylate kinase 3 like,
adenylate kinase 3 like 1, AK3,

AK3L1, AK4, ATP AMP

transphosphorylase



Immunohistochemical of paraffin-embedded human breast cancer using 13206-1-AP(AK3L1 antibody) at dilution of 1:100 (under 10x lens)



MCF7 cells were subjected to SDS PAGE followed by western blot with 13206-1-AP(AK3L1 antibody) at dilution of 1:400

Background

AK3L1(Adenylate kinase 3-like) is also named as AK3, AK3L1 and belongs to the adenylate kinase family. It catalyzes the reversible transfer of the terminal phosphate group between ATP and AMP. It is important for maintenance of homeostasis of the adenine and guanine nucleotide pools. Expression is highest in kidney and heart, moderate in liver, weak in brain, and barely detectable in placenta and lung by northern blot(PMID:11485571).

Applications

| | |
|--------------------------|--|
| Tested applications: | ELISA, WB, IHC |
| Species specificity: | Human, Mouse, Rat; other species not tested. |
| Calculated AK3L1 MW: | 223aa, 25 kDa |
| Observed AK3L1 MW: | 30 kDa |
| Positive WB detected in | MCF7 cells, human liver tissue |
| Positive IHC detected in | Human breast cancer tissue |
| Recommended dilution: | WB: 1:500-1:5000 IHC: 1:20-1:200 |

Application key: WB = Western blotting, IHC = Immunohistochemistry, IF = Immunofluorescence, IP = Immunoprecipitation

Immunogen information

| | |
|---------------------------|---------------------------|
| Immunogen: | Ag3966 |
| GenBank accession number: | BC040224 |
| Gene ID (NCBI): | 205 |
| Full name: | Adenylate kinase 3-like 1 |

Product information

| | |
|----------------------|---|
| Purification method: | Antigen affinity purification |
| Storage: | PBS with 0.1% sodium azide and 50% glycerol pH 7.3. Store at -20°C. |