

Liprin alpha 1 Polyclonal Antibody

Catalog number: 14175-1-AP

Size: 44 µg/150 µl

Source: Rabbit

Isotype: IgG

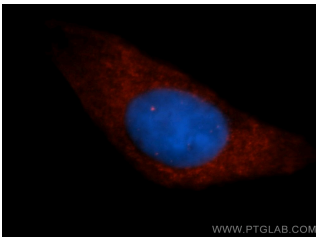
Synonyms:

PPFIA1; FLJ41337, FLJ42630,

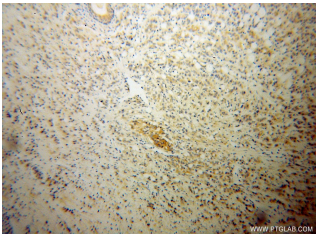
FLJ43474, LAR interacting

protein 1, LIP 1, LIP.1, LIP1,

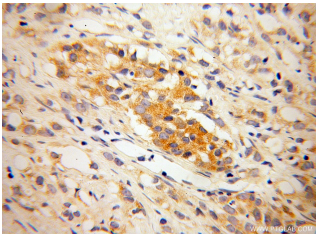
LIPRIN, Liprin alpha 1, PPFIA1



Immunofluorescent analysis of HepG2 cells, using PPFIA1 antibody 14175-1-AP at 1:50 dilution and Rhodamine-labeled goat anti-rabbit IgG (red). Blue pseudocolor = DAPI (fluorescent DNA dye).



Immunohistochemical of paraffin-embedded human prostate cancer using 14175-1-AP (PPFIA1 antibody) at dilution of 1:100 (under 10x lens)



Immunohistochemical of paraffin-embedded human prostate cancer using 14175-1-AP (PPFIA1 antibody) at dilution of 1:100 (under 40x lens)

Background

Liprin alpha 1, encoded by the PPFIA1 gene, is a member of the LAR protein-tyrosine phosphatase-interacting protein (liprin) family. Liprins interact with members of LAR family of transmembrane protein tyrosine phosphatases, which are known to be important for axon guidance and mammary gland development. Liprin alpha 1 may regulate the disassembly of focal adhesions and thus help orchestrate cell-matrix interactions (PMID: 7796809). Alternatively spliced transcript variants encoding distinct isoforms have been described.

Applications

Tested applications:	ELISA, WB, IHC, IF, IP, FC
Cited applications:	IF, IHC, WB
Species specificity:	Human, Mouse, Rat; other species not tested.
Cited species:	Human
Calculated Liprin alpha 1 MW:	1202aa, 136 kDa
Observed Liprin alpha 1 MW:	160 kDa
Positive WB detected in	HeLa cells, MCF7 cells
Positive IP detected in	MCF-7 cells
Positive IHC detected in	Human prostate cancer tissue
Positive IF detected in	HepG2 cells
Positive FC detected in	HeLa cells
Recommended dilution:	WB: 1:200-1:2000 IP: 1:200-1:2000 IHC: 1:20-1:200 IF: 1:20-1:200 FC: N/A

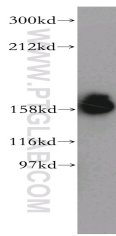
Application key: WB = Western blotting, IHC = Immunohistochemistry, IF = Immunofluorescence, IP = Immunoprecipitation

Immunogen information

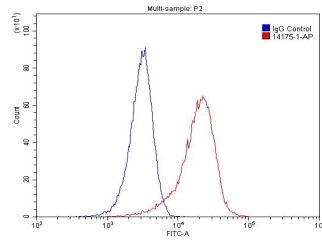
Immunogen:	Ag5381
GenBank accession number:	BC034046
Gene ID (NCBI):	8500
Full name:	Protein tyrosine phosphatase, receptor type, f polypeptide (PTPRF), interacting protein (liprin), alpha 1

Product information

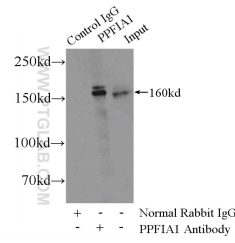
Purification method:	Antigen affinity purification
Storage:	PBS with 0.02% sodium azide and 50% glycerol pH 7.3. Store at -20°C.



HeLa cells were subjected to SDS PAGE followed by western blot with 14175-1-AP(PPFIA1 antibody) at dilution of 1:500



1X10⁶ HeLa cells were stained with 0.2ug PPFIA1 antibody (14175-1-AP, red) and control antibody (blue). Fixed with 4% PFA blocked with 3% BSA (30 min). Alexa Fluor 488-conjugated AffiniPure Goat Anti-Rabbit IgG(H+L) with dilution 1:1500.



IP Result of anti-PPFIA1 (IP:14175-1-AP, 4ug; Detection:14175-1-AP 1:500) with MCF-7 cells lysate 3200ug.