

SCFD2 Polyclonal Antibody

Catalog number: 13375-1-AP

Size: 30 µg/150 µl

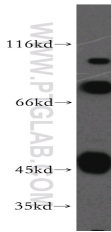
Source: Rabbit

Isotype: IgG

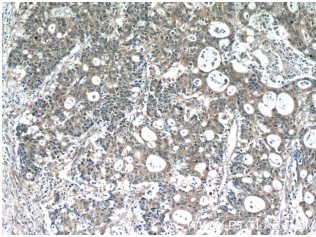
Synonyms:

SCFD2; FLJ21060, FLJ39514,

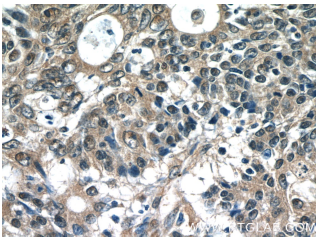
SCFD2, STXBP1L1



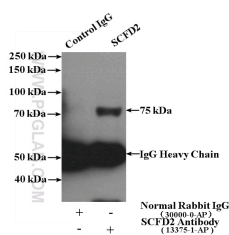
COLO 320 cells were subjected to SDS PAGE followed by western blot with 13375-1-AP(SCFD2 antibody) at dilution of 1:200



Immunohistochemistry of paraffin-embedded human colon cancer tissue slide using 13375-1-AP(SCFD2 Antibody) at dilution of 1:50 (under 10x lens)



Immunohistochemistry of paraffin-embedded human colon cancer tissue slide using 13375-1-AP(SCFD2 Antibody) at dilution of 1:50 (under 40x lens)



IP Result of anti-SCFD2

(IP:13375-1-AP, 4ug;

Applications

Tested applications:	ELISA, WB, IHC, IP
Species specificity:	Human, Mouse, Rat; other species not tested.
Calculated SCFD2 MW:	684aa, 75 kDa
Observed SCFD2 MW:	75 kDa
Positive WB detected in:	COLO 320 cells, mouse kidney tissue
Positive IP detected in:	COLO 320 cells
Positive IHC detected in:	Human colon cancer tissue, human colon tissue
Recommended dilution:	WB: 1:200-1:2000
	IP: 1:200-1:1000
	IHC: 1:20-1:200

Application key: WB = Western blotting, IHC = Immunohistochemistry, IF = Immunofluorescence, IP = Immunoprecipitation

Immunogen information

Immunogen:	Ag4197
GenBank accession number:	BC032453
Gene ID (NCBI):	152579
Full name:	Sec1 family domain containing 2

Product information

Purification method:	Antigen affinity purification
Storage:	PBS with 0.02% sodium azide and 50% glycerol pH 7.3. Store at -20°C.

Detection:13375-1-AP 1:200)
with COLO 320 cells lysate
3200ug.