

PLEKHB1 Polyclonal Antibody

Catalog number: 10512-1-AP

Size: 20 µg/150 µl

Source: Rabbit

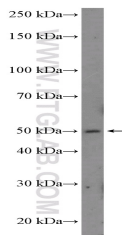
Isotype: IgG

Synonyms:

PLEKHB1; Evectin 1, EVT1,

KPL1, PHR1, PHRET1,

PLEKHB1



SH-SY5Y cells were subjected to SDS PAGE followed by western blot with 10512-1-AP (PLEKHB1 Antibody) at dilution of 1:300

Background

PLEKHB1, also named as Evectin-1, EVT1, KPL1, PHR1 and PHRET1, is required for proper localization of retinogeniculate projections but not for eye-specific segregation. PLEKHB1 has 4 isoforms with MW from 21-27kd. It has Dimer form with MW 42-54 kDa.

Applications

| | |
|-------------------------|--|
| Tested applications: | ELISA, WB |
| Species specificity: | Human,Mouse,Rat; other species not tested. |
| Calculated PLEKHB1 MW: | 21 kDa |
| Observed PLEKHB1 MW: | 50 kDa |
| Positive WB detected in | SH-SY5Y cells, Transfected HEK-293 cells |
| Recommended dilution: | WB: 1:200-1:1000 |

Application key: WB = Western blotting, IHC = Immunohistochemistry, IF = Immunofluorescence, IP = Immunoprecipitation

Immunogen information

| | |
|---------------------------|---|
| Immunogen: | Ag0797 |
| GenBank accession number: | BC008075 |
| Gene ID (NCBI): | 58473 |
| Full name: | Pleckstrin homology domain containing, family B (evectins) member 1 |

Product information

| | |
|----------------------|---|
| Purification method: | Antigen affinity purification |
| Storage: | PBS with 0.1% sodium azide and 50% glycerol pH 7.3. Store at -20°C. |