

RBBP6 Polyclonal Antibody

Catalog number: 11882-1-AP

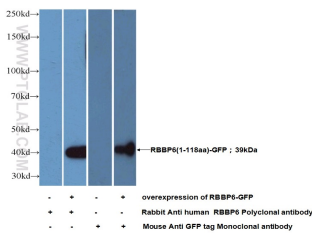
Size: 37 µg/150 µl

Source: Rabbit

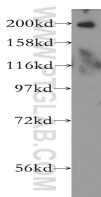
Isotype: IgG

Synonyms:

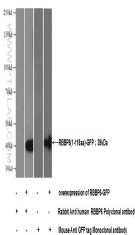
RBBP6; DKFZp686P0638,
DKFZp761B2423, MY038, P2P
R, P2PR, PACT, Protein P2P R,
RBBP6, RBQ 1, RBQ1, SNAMA



WB result of RBBP6 antibody (11882-1-AP) with RBBP6(1-118aa)-GFP transfected HEK293 cells.



HEK-293 cells were subjected to SDS PAGE followed by western blot with 11882-1-AP(RBBP6 antibody) at dilution of 1:400



Transfected HEK-293 cells were subjected to SDS PAGE followed by western blot with 11882-1-AP(RBBP6 Antibody) at dilution of 1:500

Background

RBBP6 (retinoblastoma binding protein 6) is a multifunctional protein that interacts with both p53 and pRb and has been implicated in mRNA processing. It has also been identified as a putative E3 ubiquitin ligase due to the presence of a RING finger domain [PMID:18851979]. RBBP6 contains an N-terminal ubiquitin-like domain and a cysteine-rich RING finger-like domain, through which it promotes the ubiquitination of p53 by Hdm2 in an E4-like manner [PMID:17470788]. It is implicated in a diverse set of cellular functions, including mRNA metabolism, regulation of the cell cycle, tumorigenesis, and development [PMID:12938151,17470788].

Applications

Tested applications:	ELISA, WB
Species specificity:	Human, Mouse; other species not tested.
Calculated RBBP6 MW:	1792aa,200kd
Observed RBBP6 MW:	200kd
Positive WB detected in	HEK-293 cells, mouse placenta tissue, transfected cells, Transfected HEK-293 cells
Recommended dilution:	WB: 1:200-1:2000

Application key: WB = Western blotting, IHC = Immunohistochemistry, IF = Immunofluorescence, IP = Immunoprecipitation

Immunogen information

Immunogen:	Ag2484
GenBank accession number:	BC029352
Gene ID (NCBI):	5930
Full name:	Retinoblastoma binding protein 6

Product information

Purification method:	Antigen affinity purification
Storage:	PBS with 0.1% sodium azide and 50% glycerol pH 7.3. Store at -20°C.