

PLAA Polyclonal Antibody

Catalog number: 12529-1-AP

Size: 26 µg/150 µl

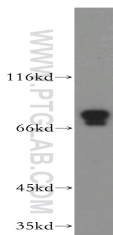
Source: Rabbit

Isotype: IgG

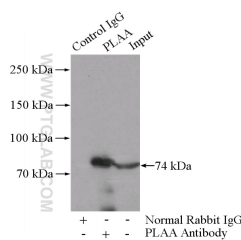
Synonyms:

PLAA; DOA1, FLJ11281,

FLJ12699, PLA2P, PLAA, PLAP



K-562 cells were subjected to SDS PAGE followed by western blot with 12529-1-AP (PLAA antibody) at dilution of 1:500



IP Result of anti-PLAA (IP:12529-1-AP, 4µg; Detection:12529-1-AP 1:600) with K-562 cells lysate 3200µg.

Background

Phospholipase A-2-activating protein (PLAA), also named PLAP, can interact with ubiquitin and is involved in the maintenance of ubiquitin levels. PLAA contains multiple consensus domains including WD repeats, PFU domain and PUL domain. Although the function of PLAA remains unclear, ubiquitin binding of PLAA might be the central role that connects ubiquitination and degradation in ERAD. Recent finding revealed that PLAA served as a novel nociceptive mediator after incision, and its expression level is regulated by miR-203.

Applications

Tested applications:	ELISA, WB, IP
Cited applications:	IHC, WB
Species specificity:	Human; other species not tested.
Cited species:	Mouse
Calculated PLAA MW:	738aa, 81 kDa
Observed PLAA MW:	72-74 kDa
Positive WB detected in:	K-562 cells, MCF7 cells
Positive IP detected in:	K-562 cells
Recommended dilution:	WB: 1:200-1:2000 IP: 1:200-1:2000

Application key: WB = Western blotting, IHC = Immunohistochemistry, IF = Immunofluorescence, IP = Immunoprecipitation

Immunogen information

Immunogen:	Ag3224
GenBank accession number:	BC032551
Gene ID (NCBI):	9373
Full name:	Phospholipase A2-activating protein

Product information

Purification method:	Antigen affinity purification
Storage:	PBS with 0.02% sodium azide and 50% glycerol pH 7.3. Store at -20°C.