

## CBY1 Polyclonal Antibody

Catalog number: 12239-1-AP

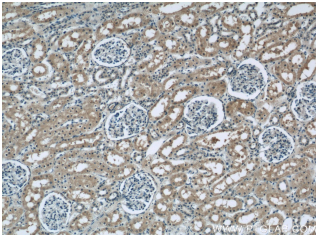
Size: 45 µg/150 µl

Source: Rabbit

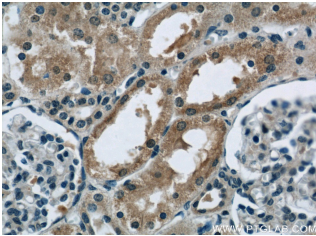
Isotype: IgG

Synonyms:

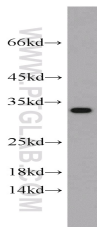
CBY1; arb1, ARPP binding protein, C22orf2, CBY, CBY1, chibby homolog 1 (Drosophila), Cytosolic leucine rich protein, HS508I15A, PGEA1, PIGEA 14, PIGEA14, Protein chibby homolog 1



Immunohistochemical of paraffin-embedded human kidney using 12239-1-AP(CBY1 antibody) at dilution of 1:50 (under 10x lens)



Immunohistochemical of paraffin-embedded human kidney using 12239-1-AP(CBY1 antibody) at dilution of 1:50 (under 40x lens)



mouse liver tissue were subjected to SDS PAGE followed by western blot with 12239-1-AP(CBY1 antibody) at dilution of 1:500

### Applications

Tested applications:	ELISA, WB, IHC, IP
Cited applications:	WB
Species specificity:	Human, Mouse, Rat; other species not tested.
Cited species:	Human
Calculated CBY1 MW:	126aa, 14 kDa
Observed CBY1 MW:	30-35 kDa
Positive WB detected in:	Mouse liver tissue, mouse kidney tissue
Positive IP detected in:	Mouse liver tissue
Positive IHC detected in:	Human kidney tissue, human heart tissue
Recommended dilution:	WB: 1:500-1:5000 IP: 1:200-1:2000 IHC: 1:20-1:200

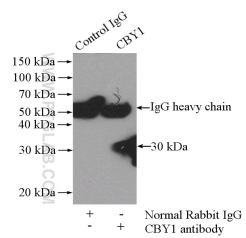
Application key: WB = Western blotting, IHC = Immunohistochemistry, IF = Immunofluorescence, IP = Immunoprecipitation

### Immunogen information

Immunogen:	Ag2882
GenBank accession number:	BC016139
Gene ID (NCBI):	25776
Full name:	Chibby homolog 1 (Drosophila)

### Product information

Purification method:	Antigen affinity purification
Storage:	PBS with 0.1% sodium azide and 50% glycerol pH 7.3. Store at -20°C.



**IP Result of anti-CBY1**  
**(IP:12239-1-AP, 4ug;**  
**Detection:12239-1-AP 1:500)**  
**with mouse liver tissue lysate**  
**4000ug.**