

ASCC2 Polyclonal Antibody

Catalog number: 11529-1-AP

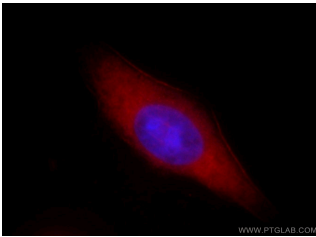
Size: 35 µg/150 µl

Source: Rabbit

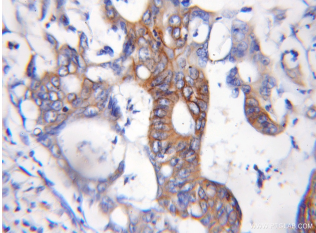
Isotype: IgG

Synonyms:

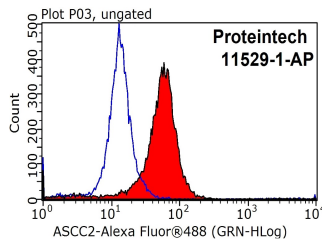
ASCC2; ASC 1 complex subunit p100, ASC1p100, ASCC2, Trip4 complex subunit p100



Immunofluorescent analysis of HepG2 cells, using ASCC2 antibody 11529-1-AP at 1:25 dilution and Rhodamine-labeled goat anti-rabbit IgG (red). Blue pseudocolor = DAPI (fluorescent DNA dye).



Immunohistochemical of paraffin-embedded human colon cancer using 11529-1-AP (ASCC2 antibody) at dilution of 1:100 (under 10x lens)



1X10⁶ HepG2 cells were stained with 0.2ug ASCC2 antibody (11529-1-AP, red) and control antibody (blue). Fixed with 90% MeOH blocked with 3% BSA (30 min). Alexa Fluor 488-conjugated AffiniPure Goat Anti-Rabbit IgG(H+L) with dilution 1:1000.

Applications

Tested applications:	ELISA, IHC, IF, WB, FC, IP
Species specificity:	Human, Mouse, Rat; other species not tested.
Calculated ASCC2 MW:	757aa, 86 kDa
Observed ASCC2 MW:	90-100 kDa
Positive WB detected in:	HeLa cells, human brain tissue, human colon tissue, mouse colon tissue
Positive IP detected in:	HeLa cells
Positive IHC detected in:	Human colon cancer tissue
Positive IF detected in:	HepG2 cells
Positive FC detected in:	HepG2 cells
Recommended dilution:	WB: 1:500-1:5000 IP: 1:500-1:5000 IHC: 1:20-1:200 IF: 1:10-1:100 FC: N/A

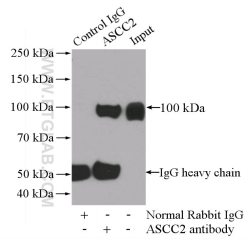
Application key: WB = Western blotting, IHC = Immunohistochemistry, IF = Immunofluorescence, IP = Immunoprecipitation

Immunogen information

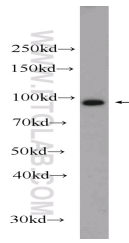
Immunogen:	Ag2100
GenBank accession number:	BC025368
Gene ID (NCBI):	84164
Full name:	Activating signal cointegrator 1 complex subunit 2

Product information

Purification method:	Antigen affinity purification
Storage:	PBS with 0.1% sodium azide and 50% glycerol pH 7.3. Store at -20°C.



IP Result of anti-ASCC2
(IP:11529-1-AP, 4ug;
Detection:11529-1-AP 1:1000)
with HeLa cells lysate 2640ug.



HeLa cells were subjected to
SDS PAGE followed by
western blot with 11529-1-
AP(ASCC2 Antibody) at
dilution of 1:1000