

## Annexin V Polyclonal Antibody

Catalog number: 11060-1-AP

Size: 48 µg/150 µl

Source: Rabbit

Isotype: IgG

Synonyms:

ANXA5; Anchorin CII, Annexin

5, annexin A5, Annexin V,

ANX5, ANXA5, Calphobindin I,

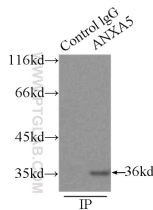
CBP I, Endonexin II, ENX2,

Lipocortin V, PAP I, PP4,

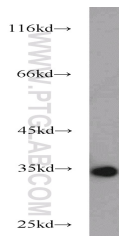
Thromboplastin inhibitor, VAC

alpha, Vascular anticoagulant

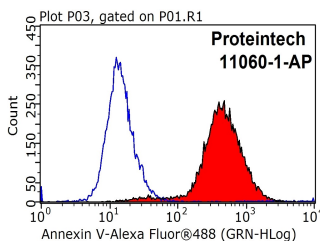
alpha



IP Result of anti-ANXA5 (IP:11060-1-AP, 3µg; Detection:11060-1-AP 1:500) with HeLa cells lysate 3000ug.



HeLa cells were subjected to SDS PAGE followed by western blot with 11060-1-AP (ANXA5 antibody) at dilution of 1:800



1X10<sup>6</sup> HeLa cells were stained with 0.2µg ANXA5 antibody (11060-1-AP, red) and control antibody (blue). Fixed with 90% MeOH blocked with 3% BSA (30 min). Alexa Fluor 488-conjugated AffiniPure Goat Anti-Rabbit IgG(H+L) with dilution 1:1000.

### Background

Annexin A5 (ANXA5), is a member of the structurally related family of annexin proteins some of which have been implicated in membrane-related events along exocytotic and endocytotic pathways. Annexin 5 is a phospholipase A2 and protein kinase C inhibitory protein with calcium channel activity and a potential role in cellular signal transduction, inflammation, growth and differentiation. Annexin 5 has also been described as placental anticoagulant protein I, vascular anticoagulant-alpha, endonexin II, lipocortin V, placental protein 4 and anchorin CII.

### Applications

Tested applications:	ELISA, WB, IP, IHC, FC, IF
Cited applications:	IHC
Species specificity:	Human, Mouse, Rat; other species not tested.
Cited species:	Human
Calculated Annexin V MW:	36 kDa
Observed Annexin V MW:	36 kDa
Positive WB detected in	HeLa cells, A431 cells, HEK-293 cells, HepG2 cells, human heart tissue, human lung tissue, human placenta tissue, human skeletal muscle tissue, NIH/3T3 cells
Positive IP detected in	HeLa cells
Positive IHC detected in	Human spleen tissue, human lung cancer tissue, human placenta tissue
Positive IF detected in	HeLa cells
Positive FC detected in	HeLa cells
Recommended dilution:	WB: 1:200-1:2000 IP: 1:200-1:2000 IHC: 1:20-1:200 IF: 1:10-1:100 FC: N/A

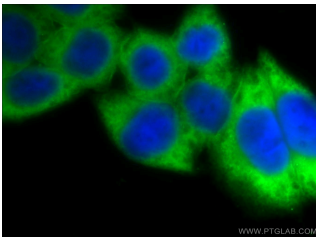
Application key: WB = Western blotting, IHC = Immunohistochemistry, IF = Immunofluorescence, IP = Immunoprecipitation

### Immunogen information

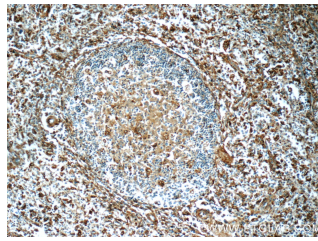
Immunogen:	Ag1538
GenBank accession number:	BC018671
Gene ID (NCBI):	308
Full name:	Annexin A5

### Product information

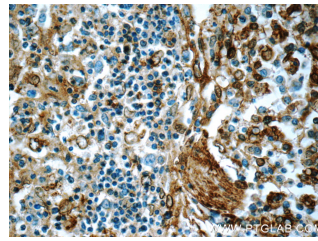
Purification method:	Antigen affinity purification
Storage:	PBS with 0.1% sodium azide and 50% glycerol pH 7.3. Store at -20°C.



**Immunofluorescent analysis of HeLa cells using 11060-1-AP( ANXA5 Antibody) at dilution of 1:25 and Alexa Fluor 488-conjugated AffiniPure Goat Anti-Rabbit IgG(H+L)**



**Immunohistochemistry of paraffin-embedded human spleen tissue slide using 11060-1-AP( ANXA5 Antibody) at dilution of 1:400 (under 10x lens)**



**Immunohistochemistry of paraffin-embedded human spleen tissue slide using 11060-1-AP( ANXA5 Antibody) at dilution of 1:400 (under 40x lens)**