

KIFC3 Polyclonal Antibody

Catalog number: 10125-2-AP

Size: 33 µg/150 µl

Source: Rabbit

Isotype: IgG

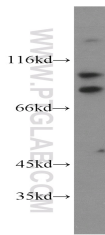
Synonyms:

KIFC3; DKFZp686D23201,

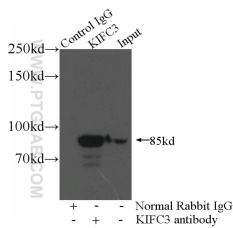
FLJ34694, KIFC3, kinesin family

member C3, Kinesin like protein

KIFC3



mouse lung tissue were subjected to SDS PAGE followed by western blot with 10125-2-AP(KIFC3 antibody) at dilution of 1:500



IP Result of anti-KIFC3 (IP:10125-2-AP, 4µg; Detection:10125-2-AP 1:500) with mouse kidney tissue lysate 7200µg.

Applications

Tested applications:	ELISA, WB, IP
Cited applications:	IF, WB
Species specificity:	Human, Mouse, Rat; other species not tested.
Cited species:	Human, monkey, mouse, rat
Calculated KIFC3 MW:	78 kDa
Observed KIFC3 MW:	80-85 kDa, 95-100 kDa
Positive WB detected in	Mouse lung tissue, mouse kidney tissue
Positive IP detected in	Mouse kidney tissue
Recommended dilution:	WB: 1:200-1:2000 IP: 1:200-1:2000

Application key: WB = Western blotting, IHC = Immunohistochemistry, IF = Immunofluorescence, IP = Immunoprecipitation

Immunogen information

Immunogen:	Ag0172
GenBank accession number:	BC001211
Gene ID (NCBI):	3801
Full name:	Kinesin family member C3

Product information

Purification method:	Antigen affinity purification
Storage:	PBS with 0.1% sodium azide and 50% glycerol pH 7.3. Store at -20°C.