

RABL2B Polyclonal Antibody

Catalog number: 11588-1-AP

Size: 25 µg/150 µl

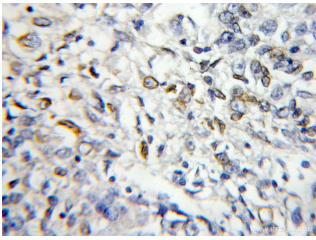
Source: Rabbit

Isotype: IgG

Synonyms:

RABL2B; FLJ93981, FLJ98216,

Rab like protein 2B, RABL2B



Immunohistochemical of paraffin-embedded human lung cancer using 11588-1-AP(RABL2B antibody) at dilution of 1:50 (under 10x lens)



human brain tissue were subjected to SDS PAGE followed by western blot with 11588-1-AP(RABL2B antibody) at dilution of 1:500

Applications

Tested applications:	ELISA, WB, IHC
Species specificity:	Human, Mouse, Rat; other species not tested.
Calculated RABL2B MW:	229aa, 26 kDa
Observed RABL2B MW:	26 kDa
Positive WB detected in	Human brain tissue, human heart tissue, human kidney tissue, human liver tissue
Positive IHC detected in	Human lung cancer tissue
Recommended dilution:	WB: 1:1000-1:10000 IHC: 1:20-1:200

Application key: WB = Western blotting, IHC = Immunohistochemistry, IF = Immunofluorescence, IP = Immunoprecipitation

Immunogen information

Immunogen:	Ag2189
GenBank accession number:	BC024281
Gene ID (NCBI):	11158
Full name:	RAB, member of RAS oncogene family-like 2B

Product information

Purification method:	Antigen affinity purification
Storage:	PBS with 0.1% sodium azide and 50% glycerol pH 7.3. Store at -20°C.