

HSD17B6 Polyclonal Antibody

Catalog number: 11855-1-AP

Size: 27 µg/150 µl

Source: Rabbit

Isotype: IgG

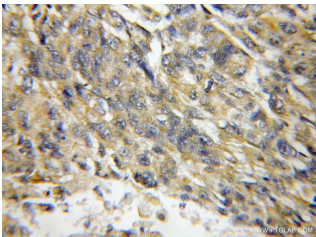
Synonyms:

HSD17B6; 17 beta HSD 6, 17

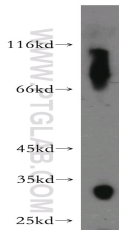
beta HSD6, 3 alpha & beta

HSE, HSD17B6, HSE, RODH,

SDR9C6



Immunohistochemical of paraffin-embedded human lung cancer using 11855-1-AP(HSD17B6 antibody) at dilution of 1:50 (under 10x lens)



human liver tissue were subjected to SDS PAGE followed by western blot with 11855-1-AP(HSD17B6 antibody) at dilution of 1:200

Applications

Tested applications:	ELISA, WB, IHC
Species specificity:	Human, Mouse, Rat; other species not tested.
Calculated HSD17B6 MW:	317aa, 36 kDa
Observed HSD17B6 MW:	33-35kd
Positive WB detected in	Human liver tissue
Positive IHC detected in	Human lung cancer tissue, human liver tissue, human prostate hyperplasia tissue
Recommended dilution:	WB: 1:200-1:1000 IHC: 1:20-1:200

Application key: WB = Western blotting, IHC = Immunohistochemistry, IF = Immunofluorescence, IP = Immunoprecipitation

Immunogen information

Immunogen:	Ag2427
GenBank accession number:	BC020710
Gene ID (NCBI):	8630
Full name:	Hydroxysteroid (17-beta) dehydrogenase 6 homolog (mouse)

Product information

Purification method:	Antigen affinity purification
Storage:	PBS with 0.1% sodium azide and 50% glycerol pH 7.3. Store at -20°C.