

ICAM2 Polyclonal Antibody

Catalog number: 10121-2-AP

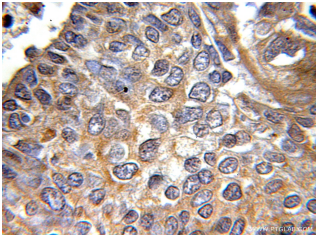
Size: 37 µg/150 µl

Source: Rabbit

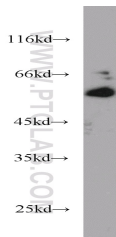
Isotype: IgG

Synonyms:

ICAM2; CD102, ICAM 2, ICAM2



Immunohistochemical of paraffin-embedded human lung cancer using 10121-2-AP (ICAM2 antibody) at dilution of 1:50 (under 10x lens)



Jurkat cells were subjected to SDS PAGE followed by western blot with 10121-2-AP (ICAM2 antibody) at dilution of 1:500

Applications

Tested applications:	ELISA, WB, IHC
Cited applications:	IHC, WB
Species specificity:	Human, Rat, Mouse; other species not tested.
Cited species:	Human
Calculated ICAM2 MW:	31 kDa
Observed ICAM2 MW:	55-80 kDa
Positive WB detected in	Jurkat cells, HEK-293 cells
Positive IHC detected in	Human lung cancer tissue
Recommended dilution:	WB: 1:200-1:2000 IHC: 1:20-1:200

Application key: WB = Western blotting, IHC = Immunohistochemistry, IF = Immunofluorescence, IP = Immunoprecipitation

Immunogen information

Immunogen:	Ag0165
GenBank accession number:	BC003097
Gene ID (NCBI):	3384
Full name:	Intercellular adhesion molecule 2

Product information

Purification method:	Antigen affinity purification
Storage:	PBS with 0.1% sodium azide and 50% glycerol pH 7.3. Store at -20°C.