

## SMARCD3 Polyclonal Antibody

Catalog number: 12838-1-AP

Size: 22 µg/150 µl

Source: Rabbit

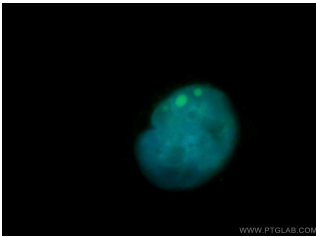
Isotype: IgG

Synonyms:

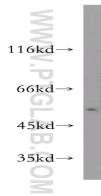
SMARCD3; BAF60C, BRG1

associated factor 60C, CRACD3,

Rsc6p, SMARCD3



Immunofluorescent analysis of HeLa cells, using SMARCD3 antibody 12838-1-AP at 1:50 dilution and FITC-labeled donkey anti-rabbit IgG (green). Blue pseudocolor = DAPI (fluorescent DNA dye).



BxPC-3 cells were subjected to SDS PAGE followed by western blot with 12838-1-AP (SMARCD3 antibody) at dilution of 1:400

### Background

SMARCD3 is a component of the SWI/SNF (mating type switching/sucrose non-fermenting) chromatin remodeling complex, which evolutionarily conserved from yeast to human, and all complexes contain a core set of conserved components, including BRG1/Brm-associated factors (BAFs) and a DNA-dependent SWI2/SNF2-like ATPase, which enables chromatin remodeling. SMARCD3 isoforms bind to several nuclear receptors and transcription factors of various families. SMARCD3 proteins interact in a ligand-independent manner with peroxisome proliferator-activated receptor gamma and enhance its transcriptional activity.

### Applications

Tested applications:	ELISA, WB, IF
Cited applications:	WB
Species specificity:	Human, Mouse, Rat; other species not tested.
Cited species:	Mouse
Calculated SMARCD3 MW:	54kd
Observed SMARCD3 MW:	54kd
Positive WB detected in	BxPC-3 cells, HeLa cells
Positive IF detected in	HeLa cells
Recommended dilution:	WB: 1:200-1:2000 IF: 1:20-1:200

Application key: WB = Western blotting, IHC = Immunohistochemistry, IF = Immunofluorescence, IP = Immunoprecipitation

### Immunogen information

Immunogen:	Ag3896
GenBank accession number:	BC002628
Gene ID (NCBI):	6604
Full name:	SWI/SNF related, matrix associated, actin dependent regulator of chromatin, subfamily d, member 3

### Product information

Purification method:	Antigen affinity purification
Storage:	PBS with 0.1% sodium azide and 50% glycerol pH 7.3. Store at -20°C.