

SUMF2 Polyclonal Antibody

Catalog number: 11210-1-AP

Size: 33 µg/150 µl

Source: Rabbit

Isotype: IgG

Synonyms:

SUMF2; DKFZp566I1024,

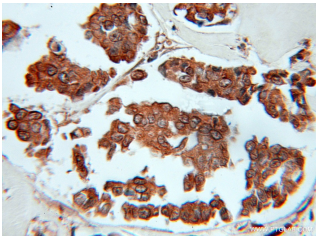
DKFZp686I1024,

DKFZp686L17160,

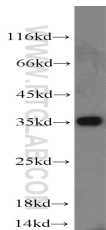
DKFZp781L1035, pFGE,

sulfatase modifying factor 2,

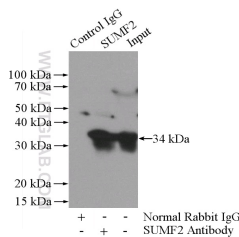
SUMF2, UNQ1968/PRO4500



Immunohistochemical of paraffin-embedded human breast cancer using 11210-1-AP (SUMF2 antibody) at dilution of 1:50 (under 10x lens)



A431 cells were subjected to SDS PAGE followed by western blot with 11210-1-AP (SUMF2 antibody) at dilution of 1:500



IP Result of anti-SUMF2 (IP:11210-1-AP, 4µg; Detection:11210-1-AP 1:500) with A431 cells lysate 1520µg.

Applications

Tested applications:	ELISA, WB, IHC, IP
Species specificity:	Human, Mouse, Rat; other species not tested.
Calculated SUMF2 MW:	34 kDa
Observed SUMF2 MW:	34 kDa
Positive WB detected in	A431 cells, human lung tissue, human skin tissue, human spleen tissue
Positive IP detected in	A431 cells
Positive IHC detected in	Human breast cancer tissue
Recommended dilution:	WB: 1:200-1:2000 IP: 1:200-1:2000 IHC: 1:20-1:200

Application key: WB = Western blotting, IHC = Immunohistochemistry, IF = Immunofluorescence, IP = Immunoprecipitation

Immunogen information

Immunogen:	Ag1711
GenBank accession number:	BC015600
Gene ID (NCBI):	25870
Full name:	Sulfatase modifying factor 2

Product information

Purification method:	Antigen affinity purification
Storage:	PBS with 0.1% sodium azide and 50% glycerol pH 7.3. Store at -20°C.