

## RPL9 Polyclonal Antibody

Catalog number: 14117-1-AP

Size: 20 µg/150 µl

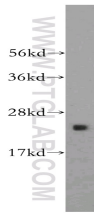
Source: Rabbit

Isotype: IgG

Synonyms:

RPL9; DKFZp313J1510;

FLJ27456; MGC15545; NPC-A-16



human brain tissue were subjected to SDS PAGE followed by western blot with 14117-1-AP(RPL9 Antibody) at dilution of 1:600

### Applications

Tested applications:	ELISA, WB
Species specificity:	Human, mouse, rat; other species not tested.
Positive WB detected in:	Human brain tissue
Calculated RPL9 MW:	22kd
Observed RPL9 MW:	22kd
Recommended dilution:	WB: 1:200-1:2000

Application key: WB = Western blotting, IHC = Immunohistochemistry, IF = Immunofluorescence, IP = Immunoprecipitation, FC = Flow cytometry

### Immunogen information

Immunogen:	Ag5266
GenBank accession number:	BC066318
Gene ID (NCBI):	6133
Full name:	Ribosomal protein L9

### Product information

Purification method:	Antigen affinity purification
Storage:	PBS with 0.02% sodium azide and 50% glycerol pH 7.3. Store at -20°C.