

## LILRB5 Polyclonal Antibody

Catalog number: 12881-1-AP

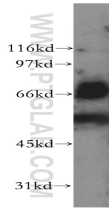
Size: 32 µg/150 µl

Source: Rabbit

Isotype: IgG

Synonyms:

LILRB5; LILRB5, LIR 8, LIR8,  
CD85C



Jurkat cells were subjected to SDS  
PAGE followed by western blot with  
12881-1-AP(LILRB5 antibody) at  
dilution of 1:1500

### Applications

Tested applications:	ELISA, WB
Species specificity:	Human; other species not tested.
Calculated LILRB5 MW:	590aa,64 kDa
Observed LILRB5 MW:	64kd
Positive WB detected in	Jurkat cells
Recommended dilution:	WB: 1:1000-1:10000

Application key: WB = Western blotting, IHC = Immunohistochemistry, IF = Immunofluorescence, IP = Immunoprecipitation

### Immunogen information

Immunogen:	Ag3886
GenBank accession number:	BC025704
Gene ID (NCBI):	10990
Full name:	Leukocyte immunoglobulin-like receptor, subfamily B (with TM and ITIM domains), member 5

### Product information

Purification method:	Antigen affinity purification
Storage:	PBS with 0.02% sodium azide and 50% glycerol pH 7.3. Store at -20°C.