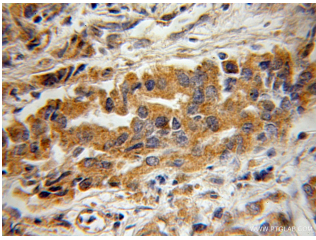
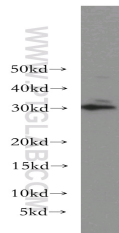


BIN3 Polyclonal Antibody

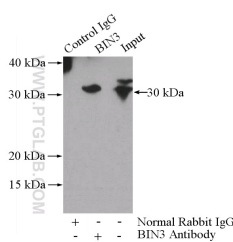
Catalog number: 11215-1-AP
Size: 20 µg/150 µl
Source: Rabbit
Isotype: IgG
Synonyms:
BIN3; BIN3, bridging integrator
3



Immunohistochemical of paraffin-embedded human prostate cancer using 11215-1-AP (BIN3 antibody) at dilution of 1:50 (under 10x lens)



K-562 cells were subjected to SDS PAGE followed by western blot with 11215-1-AP (BIN3 antibody) at dilution of 1:300



IP Result of anti-BIN3 (IP:11215-1-AP, 4µg; Detection:11215-1-AP 1:300) with K-562 cells lysate 3200µg.

Background

Bridging integrator 3 (BIN3) is a conserved BAR (Bin/amphiphysin/ Rvs) domain adaptor protein (PMID: 11274158). BAR domain proteins, sharing an N-terminal BAR domain, have been implicated in diverse cellular processes, including endocytosis, vesicle fusion, cell polarity, actin organization, signal transduction, transcription repression, and tumor suppression (PMID: 16524918). BIN3 is involved in cytokinesis and septation where it has a role in the localization of F-actin (PMID: 11274158).

Applications

Tested applications:	ELISA, WB, IHC, IP
Cited applications:	WB
Species specificity:	Human, Mouse, Rat; other species not tested.
Cited species:	Mouse
Calculated BIN3 MW:	30 kDa
Observed BIN3 MW:	30 kDa
Positive WB detected in	K-562 cells, HeLa cells
Positive IP detected in	K-562 cells
Positive IHC detected in	Human prostate cancer tissue
Recommended dilution:	WB: 1:200-1:2000 IP: 1:200-1:1000 IHC: 1:20-1:200

Application key: WB = Western blotting, IHC = Immunohistochemistry, IF = Immunofluorescence, IP = Immunoprecipitation

Immunogen information

Immunogen:	Ag1713
GenBank accession number:	BC009824
Gene ID (NCBI):	55909
Full name:	Bridging integrator 3

Product information

Purification method:	Antigen affinity purification
Storage:	PBS with 0.1% sodium azide and 50% glycerol pH 7.3. Store at -20°C.