

## TBX21,T-bet Polyclonal Antibody

Catalog number: 13700-1-AP

Size: 20 µg/150 µl

Source: Rabbit

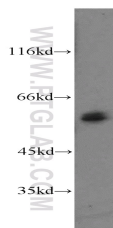
Isotype: IgG

Synonyms:

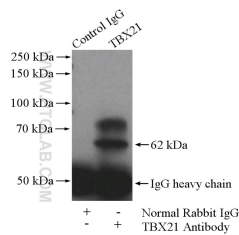
TBX21; T bet, T box 21, T box protein 21, T PET, TBET,

TBLYM, TBX21, TBX21,T bet,

Transcription factor TBLYM



mouse thymus tissue were subjected to SDS PAGE followed by western blot with 13700-1-AP(TBX21,T-bet antibody) at dilution of 1:300



IP Result of anti-TBX21,T-bet (IP:13700-1-AP, 4ug; Detection:13700-1-AP 1:300) with mouse thymus tissue lysate 2800ug.

### Background

TBX21 is a transcription factor that drives the Th1 immune response primarily through promoting expression of the IFN- $\gamma$  gene. TBX21 initiates TH1 lineage development from naive TH precursor cells both by activating TH1 genetic programs and by repressing the opposing TH2 programs. It has also been shown to play an influential role in inflammatory processes such as inflammatory bowel disease, autoimmune diseases such as rheumatoid arthritis, and immune-mediated conditions like asthma.

### Applications

Tested applications: ELISA, WB, IP

Cited applications: WB

Species specificity: Human, Mouse; other species not tested.

Cited species: Human, mouse

Calculated TBX21,T-bet MW: 535aa,58 kDa

Observed TBX21,T-bet MW: 60-62 kDa

Positive WB detected in Mouse thymus tissue

Positive IP detected in Mouse thymus tissue

Recommended dilution: WB: 1:200-1:1000

IP: 1:200-1:1000

Application key: WB = Western blotting, IHC = Immunohistochemistry, IF = Immunofluorescence, IP = Immunoprecipitation

### Immunogen information

Immunogen: Ag4618

GenBank accession number: BC039739

Gene ID (NCBI): 30009

Full name: T-box 21

### Product information

Purification method: Antigen affinity purification

Storage: PBS with 0.02% sodium azide and 50% glycerol pH 7.3. Store at -20°C.