

LYZL6 Polyclonal Antibody

Catalog number: 11922-1-AP

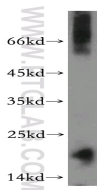
Size: 20 µg/150 µl

Source: Rabbit

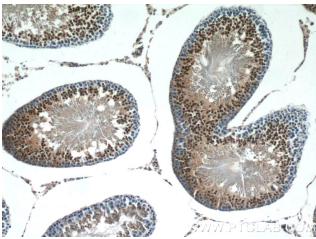
Isotype: IgG

Synonyms:

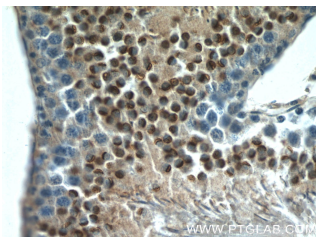
LYZL6; 1700023H08Rik, LYC1, lysozyme like 6, Lysozyme like protein 6, LYZL6, PRO1485, TKAL754



human testis tissue were subjected to SDS PAGE followed by western blot with 11922-1-AP(LYZL6 antibody) at dilution of 1:300



Immunohistochemistry of paraffin-embedded rat testis tissue slide using 11922-1-AP(LYZL6 Antibody) at dilution of 1:50 (under 10x lens)



Immunohistochemistry of paraffin-embedded rat testis tissue slide using 11922-1-AP(LYZL6 Antibody) at dilution of 1:50 (under 40x lens)

Applications

Tested applications:	ELISA, WB, IHC
Species specificity:	Human, Mouse, Rat; other species not tested.
Calculated LYZL6 MW:	148aa, 17 kDa
Observed LYZL6 MW:	17kd
Positive WB detected in:	Human testis tissue
Positive IHC detected in:	Rat testis tissue, mouse testis tissue
Recommended dilution:	WB: 1:200-1:2000 IHC: 1:20-1:200

Application key: WB = Western blotting, IHC = Immunohistochemistry, IF = Immunofluorescence, IP = Immunoprecipitation

Immunogen information

Immunogen:	Ag2569
GenBank accession number:	BC054481
Gene ID (NCBI):	57151
Full name:	Lysozyme-like 6

Product information

Purification method:	Antigen affinity purification
Storage:	PBS with 0.02% sodium azide and 50% glycerol pH 7.3. Store at -20°C.