

## RAB39B Polyclonal Antibody

Catalog number: 12162-1-AP

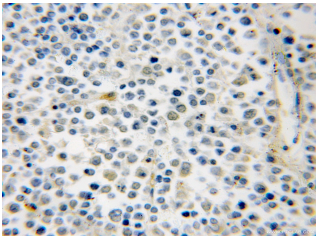
Size: 21 µg/150 µl

Source: Rabbit

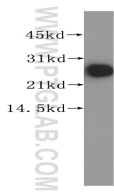
Isotype: IgG

Synonyms:

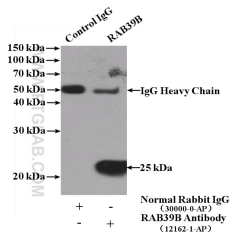
RAB39B; RAB39B, Ras related protein Rab 39B



Immunohistochemical of paraffin-embedded human lymphoma using 12162-1-AP(RAB39B antibody) at dilution of 1:50 (under 10x lens)



human brain tissue were subjected to SDS PAGE followed by western blot with 12162-1-AP(RAB39B antibody) at dilution of 1:200



IP Result of anti-RAB39B (IP:12162-1-AP, 4µg; Detection:12162-1-AP 1:300) with mouse brain tissue lysate 4000µg.

### Applications

Tested applications:	ELISA, WB, IHC, IP
Cited applications:	IF, WB
Species specificity:	Human, Mouse, Rat; other species not tested.
Cited species:	Human, mouse
Calculated RAB39B MW:	213aa, 25 kDa
Observed RAB39B MW:	25 kDa
Positive WB detected in	Human brain tissue, Y79 cells
Positive IP detected in	Mouse brain tissue
Positive IHC detected in	Human lymphoma tissue
Recommended dilution:	WB: 1:200-1:2000
	IP: 1:200-1:1000
	IHC: 1:20-1:200

Application key: WB = Western blotting, IHC = Immunohistochemistry, IF = Immunofluorescence, IP = Immunoprecipitation

### Immunogen information

Immunogen:	Ag2803
GenBank accession number:	BC009714
Gene ID (NCBI):	116442
Full name:	RAB39B, member RAS oncogene family

### Product information

Purification method:	Antigen affinity purification
Storage:	PBS with 0.1% sodium azide and 50% glycerol pH 7.3. Store at -20°C.