

CSTF2T Polyclonal Antibody

Catalog number: 14206-1-AP

Size: 62 µg/150 µl

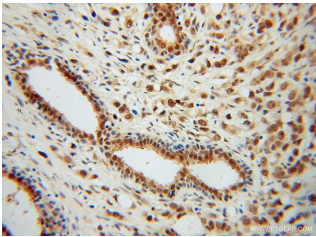
Source: Rabbit

Isotype: IgG

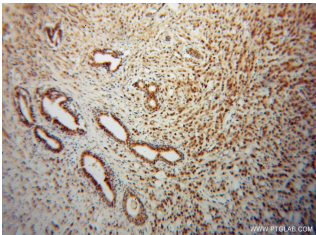
Synonyms:

CSTF2T; CstF 64T, CSTF2T,
DKFZp434C1013, KIAA0689,

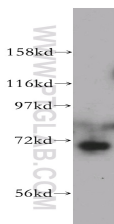
TauCstF 64



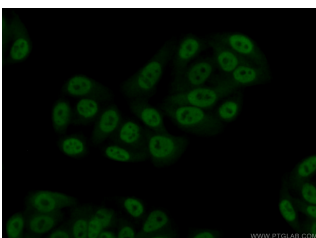
Immunohistochemical of paraffin-embedded human prostate cancer using 14206-1-AP (CSTF2T antibody) at dilution of 1:100 (under 40x lens)



Immunohistochemical of paraffin-embedded human prostate cancer using 14206-1-AP (CSTF2T antibody) at dilution of 1:100 (under 10x lens)



HeLa cells were subjected to SDS PAGE followed by western blot with 14206-1-AP (CSTF2T antibody) at dilution of 1:500



Immunofluorescent analysis of (10% Formaldehyde) fixed

Applications

Tested applications:	ELISA, WB, IHC, IF, IP
Species specificity:	Human, Mouse, Rat; other species not tested.
Calculated CSTF2T MW:	64 kDa
Observed CSTF2T MW:	70 kDa
Positive WB detected in	HeLa cells, human brain tissue, rat brain tissue
Positive IP detected in	Mouse brain tissue, HeLa cells
Positive IHC detected in	Human prostate cancer tissue
Positive IF detected in	HepG2 cells
Recommended dilution:	WB: 1:500-1:5000 IP: 1:500-1:5000 IHC: 1:20-1:200 IF: 1:50-1:500

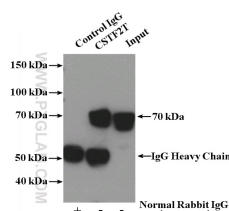
Application key: WB = Western blotting, IHC = Immunohistochemistry, IF = Immunofluorescence, IP = Immunoprecipitation

Immunogen information

Immunogen:	Ag5411
GenBank accession number:	BC028239
Gene ID (NCBI):	23283
Full name:	Cleavage stimulation factor, 3' pre-RNA, subunit 2, 64kDa, tau variant

Product information

Purification method:	Antigen affinity purification
Storage:	PBS with 0.02% sodium azide and 50% glycerol pH 7.3. Store at -20°C.



IP Result of anti-CSTF2T (IP:14206-1-AP, 4ug;

HepG2 cells using 14206-1-AP (CSTF2T Antibody) at dilution of 1:50 and Alexa Fluor 488-conjugated AffiniPure Goat Anti-Rabbit IgG(H+L)

Detection:14206-1-AP 1:1000) with mouse brain tissue lysate 5200ug.