

## EMAP II Polyclonal Antibody

Catalog number: 11091-1-AP

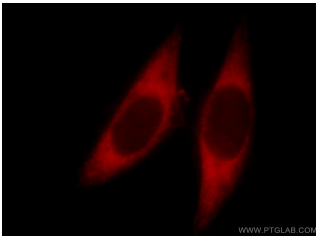
Size: 20 µg/150 µl

Source: Rabbit

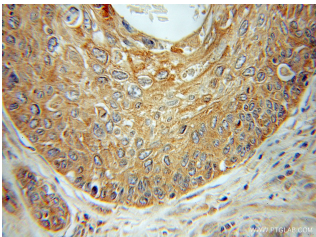
Isotype: IgG

Synonyms:

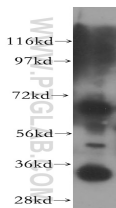
SCYE1; AIMP1, EMAP 2, EMAP II, EMAP2, EMAPII, p43, SCYE1



Immunofluorescent analysis of HeLa cells, using SCYE1 antibody 11091-1-AP at 1:25 dilution and Rhodamine-labeled goat anti-rabbit IgG (red).



Immunohistochemical of paraffin-embedded human cervical cancer using 11091-1-AP(SCYE1 antibody) at dilution of 1:100 (under 10x lens)



SGC-7901 cells were subjected to SDS PAGE followed by western blot with 11091-1-AP(SCYE1 antibody) at dilution of 1:500

### Background

SCYE1 (small inducible cytokine subfamily E, member 1) is also named as EMAP2, AIMP1. The human cDNA encodes a 312-amino acid polypeptide that the predicted 34-kD precursor can be cleaved to produce an active 20-kD product (PMID:7929199). SCYE1 is secreted as a result of various stimuli, including TNF- $\alpha$ , heat shock, and hypoxia, and that it acts as a multifunctional cytokine on both endothelial and immune cells (PMID:18292511). Defects in AIMP1 are the cause of leukodystrophy hypomyelinating type 3 (HLD3). It has 2 isoforms produced by alternative splicing and the protein can exist as a dimer (PMID:11306575).

### Applications

Tested applications:	ELISA, WB, IHC, IF
Species specificity:	Human, Mouse, Rat; other species not tested.
Calculated EMAP II MW:	34kd
Observed EMAP II MW:	34kd and 68kd
Positive WB detected in	SGC-7901 cells, mouse pancreas tissue
Positive IHC detected in	Human cervical cancer tissue
Positive IF detected in	Hela cells
Recommended dilution:	WB: 1:1000-1:10000
	IHC: 1:20-1:200
	IF: 1:10-1:100

Application key: WB = Western blotting, IHC = Immunohistochemistry, IF = Immunofluorescence, IP = Immunoprecipitation

### Immunogen information

Immunogen:	Ag1560
GenBank accession number:	BC014051
Gene ID (NCBI):	9255
Full name:	Small inducible cytokine subfamily E, member 1 (endothelial monocyte-activating)

### Product information

Purification method:	Antigen affinity purification
Storage:	PBS with 0.1% sodium azide and 50% glycerol pH 7.3. Store at -20°C.