

SH3GL3 Polyclonal Antibody

Catalog number: 13849-1-AP

Size: 26 µg/150 µl

Source: Rabbit

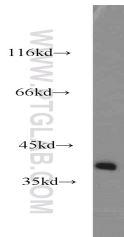
Isotype: IgG

Synonyms:

SH3GL3; CNSA3; EEN-2B-L3;

EEN-B2; HsT19371; SH3D2C;

SH3P13



human brain tissue were subjected to SDS PAGE followed by western blot with 13849-1-AP(SH3GL3 Antibody) at dilution of 1:800

Applications

Tested applications:	ELISA, WB
Species specificity:	Human, mouse, rat; other species not tested.
Positive WB detected in:	Human brain tissue
Calculated SH3GL3 MW:	39kd
Observed SH3GL3 MW:	39.3kd
Recommended dilution:	WB: 1:200-1:2000

Application key: WB = Western blotting, IHC = Immunohistochemistry, IF = Immunofluorescence, IP = Immunoprecipitation, FC = Flow cytometry

Immunogen information

Immunogen:	Ag4819
GenBank accession number:	BC042864
Gene ID (NCBI):	6457
Full name:	SH3-domain GRB2-like 3

Product information

Purification method:	Antigen affinity purification
Storage:	PBS with 0.02% sodium azide and 50% glycerol pH 7.3. Store at -20°C.