

RDH12 Polyclonal Antibody

Catalog number: 13289-3-AP

Size: 20 µg/150 µl

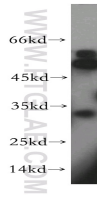
Source: Rabbit

Isotype: IgG

Synonyms:

RDH12; FLJ30273; LCA13; LCA3;

SDR7C2



human skeletal muscle tissue were subjected to SDS PAGE followed by western blot with 13289-3-AP(RDH12 Antibody) at dilution of 1:1000

Applications

Tested applications:	ELISA, WB
Species specificity:	Human, mouse, rat; other species not tested.
Positive WB detected in:	Human skeletal muscle tissue, COLO 320 cells
Calculated RDH12 MW:	316aa,35kd
Observed RDH12 MW:	35kd
Recommended dilution:	WB: 1:500-1:5000

Application key: WB = Western blotting, IHC = Immunohistochemistry, IF = Immunofluorescence, IP = Immunoprecipitation, FC = Flow cytometry

Immunogen information

Immunogen:	Ag3850
GenBank accession number:	BC025724
Gene ID (NCBI):	145226
Full name:	Retinol dehydrogenase 12 (all-trans/9-cis/11-cis)

Product information

Purification method:	Antigen affinity purification
Storage:	PBS with 0.02% sodium azide and 50% glycerol pH 7.3. Store at -20°C.