

## LILRA2 Polyclonal Antibody

Catalog number: 11461-1-AP

Size: 30 µg/150 µl

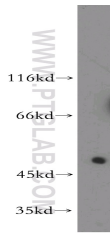
Source: Rabbit

Isotype: IgG

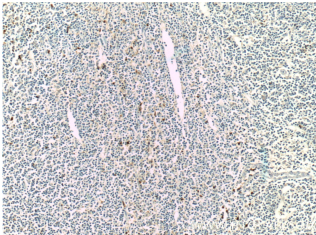
Synonyms:

LILRA2; CD85H, ILT 1, ILT1,

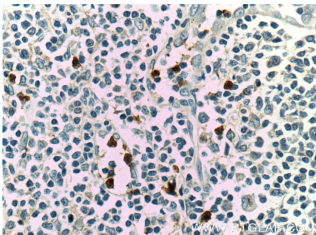
LILRA2, LIR 7, LIR7



human liver tissue were subjected to SDS PAGE followed by western blot with 11461-1-AP(LILRA2 antibody) at dilution of 1:500



Immunohistochemistry of paraffin-embedded human tonsillitis tissue slide using 11461-1-AP( LILRA2 Antibody) at dilution of 1:200 (under 10x lens)



Immunohistochemistry of paraffin-embedded human tonsillitis tissue slide using 11461-1-AP( LILRA2 Antibody) at dilution of 1:200 (under 40x lens)

### Applications

<b>Tested applications:</b>	ELISA, WB, IHC
<b>Species specificity:</b>	Human; other species not tested.
<b>Calculated LILRA2 MW:</b>	466aa,51 kDa
<b>Observed LILRA2 MW:</b>	53kd
<b>Positive WB detected in</b>	Human liver tissue
<b>Positive IHC detected in</b>	Human tonsillitis tissue
<b>Recommended dilution:</b>	WB: 1:200-1:2000
	IHC: 1:20-1:200

Application key: WB = Western blotting, IHC = Immunohistochemistry, IF = Immunofluorescence, IP = Immunoprecipitation

### Immunogen information

<b>Immunogen:</b>	Ag2003
<b>GenBank accession number:</b>	BC017412
<b>Gene ID (NCBI):</b>	11027
<b>Full name:</b>	Leukocyte immunoglobulin-like receptor, subfamily A (with TM domain), member 2

### Product information

<b>Purification method:</b>	Antigen affinity purification
<b>Storage:</b>	PBS with 0.02% sodium azide and 50% glycerol pH 7.3. Store at -20°C.