

MLX Polyclonal Antibody

Catalog number: 12042-1-AP

Size: 67 µg/150 µl

Source: Rabbit

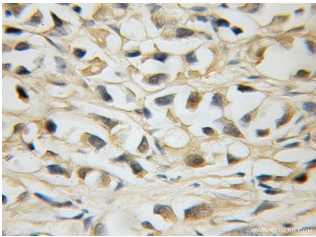
Isotype: IgG

Synonyms:

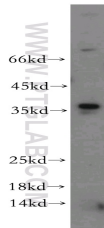
MLX; MLX, MAD7, bHLHd13,

Protein BigMax, Max like

bHLHZip protein



Immunohistochemical of paraffin-embedded human prostate cancer using 12042-1-AP (MLX antibody) at dilution of 1:50 (under 10x lens)



mouse thymus tissue were subjected to SDS PAGE followed by western blot with 12042-1-AP (MLX antibody) at dilution of 1:200

Applications

Tested applications:	ELISA, WB, IHC
Species specificity:	Human, mouse, rat; other species not tested.
Calculated MLX MW:	298aa, 33 kDa
Observed MLX MW:	33kd
Positive WB detected in:	Mouse thymus tissue, mouse ovary tissue
Positive IHC detected in:	Human prostate cancer
Recommended dilution:	WB: 1:200-1:2000 IHC: 1:20-1:200

Application key: WB = Western blotting, IHC = Immunohistochemistry, IF = Immunofluorescence, IP = Immunoprecipitation

Immunogen information

Immunogen:	Ag2671
GenBank accession number:	BC010689
Gene ID (NCBI):	6945
Full name:	MAX-like protein X

Product information

Purification method:	Antigen affinity purification
Storage:	PBS with 0.02% sodium azide and 50% glycerol pH 7.3. Store at -20°C.