

NELF-A Polyclonal Antibody

Catalog number: 10456-1-AP

Size: 55 µg/150 µl

Source: Rabbit

Isotype: IgG

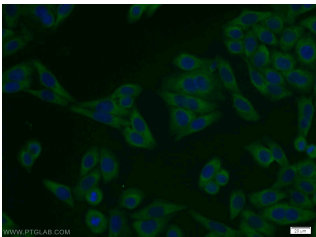
Synonyms:

WHSC2; FLJ10442, FLJ25112,

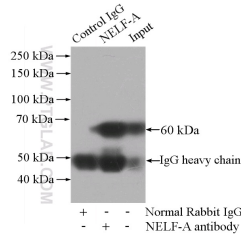
Negative elongation factor A,

NELF A, NELFA, P/OKcl.15,

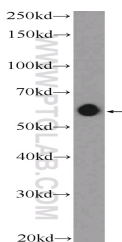
WHSC2



Immunofluorescent analysis of HeLa cells using 10456-1-AP (NELF-A Antibody) at dilution of 1:25 and Alexa Fluor 488-conjugated AffiniPure Goat Anti-Rabbit IgG(H+L)



IP Result of anti-NELF-A (IP:10456-1-AP, 4µg; Detection:10456-1-AP 1:500) with mouse brain tissue lysate 3440µg.



HeLa cells were subjected to SDS PAGE followed by western blot with 10456-1-AP (NELF-A Antibody) at dilution of 1:1000

Background

WHSC2, also known as NELF-A, is a component of the Negative ELongation Factor complex, which inhibits RNA polymerase II progression early during elongation (a process referred to as 'promoter proximal pausing'), thereby altering expression of its target genes in a positive and negative manner [PMID:19245807]. This complex acts with DRB sensitivity-inducing factor (DSIF), a heterodimer of SPT4 and SPT5, to cause transcriptional pausing of RNA polymerase II [PMID:12612062].

Applications

Tested applications:	ELISA, IF, WB, IP
Species specificity:	Human, Mouse; other species not tested.
Calculated NELF-A MW:	57 kDa
Observed NELF-A MW:	60 kDa
Positive WB detected in	HeLa cells, Jurkat cells, mouse brain tissue, mouse liver tissue
Positive IP detected in	Mouse brain tissue
Positive IF detected in	HeLa cells
Recommended dilution:	WB: 1:500-1:5000 IP: 1:200-1:2000 IF: 1:10-1:100

Application key: WB = Western blotting, IHC = Immunohistochemistry, IF = Immunofluorescence, IP = Immunoprecipitation

Immunogen information

Immunogen:	Ag0708
GenBank accession number:	BC002764
Gene ID (NCBI):	7469
Full name:	Wolf-Hirschhorn syndrome candidate 2

Product information

Purification method:	Antigen affinity purification
Storage:	PBS with 0.1% sodium azide and 50% glycerol pH 7.3. Store at -20°C.