

## VCAM-1 Polyclonal Antibody

Catalog number: 11444-1-AP

Size: 34 µg/150 µl

Source: Rabbit

Isotype: IgG

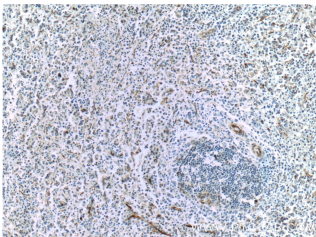
Synonyms:

VCAM1; CD106,

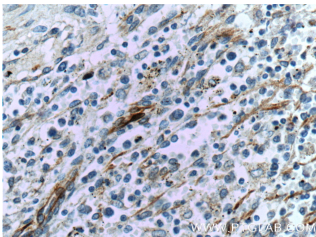
DKFZp779G2333, INCAM 100,

L1CAM, V CAM 1, VCAM 1,

VCAM1



Immunohistochemistry of paraffin-embedded human spleen tissue slide using 11444-1-AP (VCAM-1 Antibody) at dilution of 1:50 (under 10x lens)



Immunohistochemistry of paraffin-embedded human spleen tissue slide using 11444-1-AP (VCAM-1 Antibody) at dilution of 1:50 (under 40x lens)

### Background

Vascular cell adhesion molecule 1 (VCAM1), also known as CD106, is a transmembrane glycoprotein belonging to the immunoglobulin gene superfamily. VCAM1 is expressed by cytokine-activated endothelium, interacts with integrin VLA4 ( $\alpha 4\beta 1$ ) present on the surface of leukocytes, and mediates both adhesion and signal transduction. It is also expressed either constitutively or inducibly in a variety of other cell types, including vascular smooth muscle cells, differentiating skeletal muscle cells, renal and neural epithelial cells, macrophages (Kupffer cells), dendritic cells, and bone marrow stromal cells (PMID: 7507076, 11359843).

### Applications

Tested applications:	ELISA, IHC
Cited applications:	FC, IF, IHC, WB
Species specificity:	Human, Mouse, Rat; other species not tested.
Cited species:	Human, mouse
Calculated VCAM-1 MW:	739aa, 81 kDa
Observed VCAM-1 MW:	
Positive IHC detected in	Human spleen tissue, human kidney tissue, human lung cancer tissue, human placenta tissue, human tonsillitis tissue
Recommended dilution:	IHC: 1:20-1:200

Application key: WB = Western blotting, IHC = Immunohistochemistry, IF = Immunofluorescence, IP = Immunoprecipitation

### Immunogen information

Immunogen:	Ag1993
GenBank accession number:	BC017276
Gene ID (NCBI):	7412
Full name:	Vascular cell adhesion molecule 1

### Product information

Purification method:	Antigen affinity purification
Storage:	PBS with 0.1% sodium azide and 50% glycerol pH 7.3. Store at -20°C.