

RBM10 Polyclonal Antibody

Catalog number: 14423-1-AP

Size: 63 µg/150 µl

Source: Rabbit

Isotype: IgG

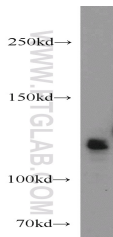
Synonyms:

RBM10; DXS8237E, GPATC9,
GPATCH9, KIAA0122, RBM10,
RNA binding motif protein 10,
RNA binding protein 10, RNA
binding protein S1 1, S1 1,
ZRANB5

Applications

Tested applications:	ELISA, WB, IP
Species specificity:	Human, Mouse, Rat; other species not tested.
Calculated RBM10 MW:	104 kDa
Observed RBM10 MW:	120 kDa
Positive WB detected in	Human brain tissue
Positive IP detected in	Mouse brain tissue
Recommended dilution:	WB: 1:500-1:5000 IP: 1:200-1:2000

Application key: WB = Western blotting, IHC = Immunohistochemistry, IF = Immunofluorescence, IP = Immunoprecipitation



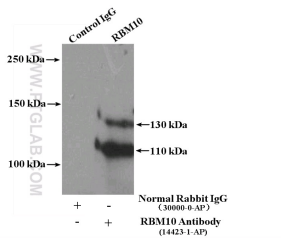
human brain tissue were subjected to SDS PAGE followed by western blot with 14423-1-AP(RBM10 antibody) at dilution of 1:1000

Immunogen information

Immunogen:	Ag5788
GenBank accession number:	BC024153
Gene ID (NCBI):	8241
Full name:	RNA binding motif protein 10

Product information

Purification method:	Antigen affinity purification
Storage:	PBS with 0.02% sodium azide and 50% glycerol pH 7.3. Store at -20°C.



IP Result of anti-RBM10 (IP:14423-1-AP, 4µg; Detection:14423-1-AP 1:800) with mouse brain tissue lysate 4000µg.