

COX6B1 Polyclonal Antibody

Catalog number: 11425-1-AP

Size: 42 µg/150 µl

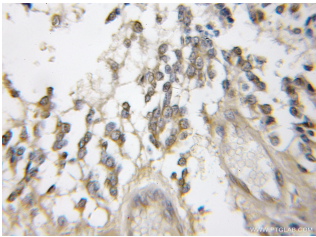
Source: Rabbit

Isotype: IgG

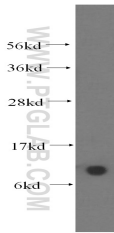
Synonyms:

COX6B1; COX VIb 1, COX6B,

COX6B1, COXG



Immunohistochemical of paraffin-embedded human gliomas using 11425-1-AP(COX6B1 antibody) at dilution of 1:50 (under 10x lens)



human liver tissue were subjected to SDS PAGE followed by western blot with 11425-1-AP(COX6B1 antibody) at dilution of 1:400

Background

COX6B1 (Cytochrome c oxidase subunit 6B1) is also named as COX6B and belongs to the cytochrome c oxidase subunit 6B family. It connects the two COX monomers into the physiological dimeric form. Defects in COX6B1 are a cause of mitochondrial complex IV deficiency (MT-C4D).

Applications

Tested applications:	ELISA, WB, IHC
Cited applications:	WB
Species specificity:	Human, Mouse, Rat; other species not tested.
Cited species:	Human
Calculated COX6B1 MW:	80aa, 10kd
Observed COX6B1 MW:	10kd
Positive WB detected in	Human liver tissue, human heart tissue
Positive IHC detected in	Human gliomas tissue
Recommended dilution:	WB: 1:500-1:5000 IHC: 1:20-1:200

Application key: WB = Western blotting, IHC = Immunohistochemistry, IF = Immunofluorescence, IP = Immunoprecipitation

Immunogen information

Immunogen:	Ag1984
GenBank accession number:	BC001015
Gene ID (NCBI):	1340
Full name:	Cytochrome c oxidase subunit VIb polypeptide 1 (ubiquitous)

Product information

Purification method:	Antigen affinity purification
Storage:	PBS with 0.1% sodium azide and 50% glycerol pH 7.3. Store at -20°C.