

## PSAT1 Polyclonal Antibody

Catalog number: 10501-1-AP

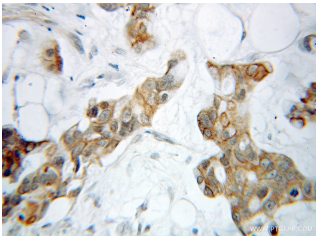
Size: 50 µg/150 µl

Source: Rabbit

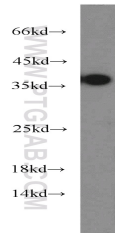
Isotype: IgG

Synonyms:

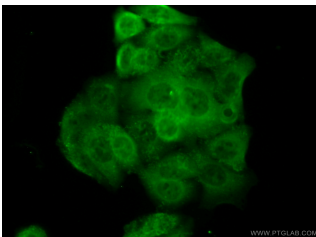
PSAT1; EPIP, Phosphoserine aminotransferase, PSA, PSAT, PSAT1



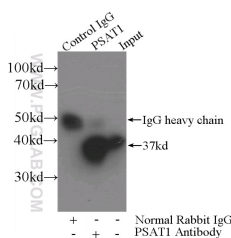
Immunohistochemical of paraffin-embedded human pancreas cancer using 10501-1-AP(PSAT1 antibody) at dilution of 1:10 (under 10x lens)



HepG2 cells were subjected to SDS PAGE followed by western blot with 10501-1-AP(PSAT1 antibody) at dilution of 1:600



Immunofluorescent analysis of HepG2 cells using 10501-1-AP( PSAT1 Antibody) at dilution of 1:50 and Alexa Fluor 488-conjugated AffiniPure Goat Anti-Rabbit IgG(H+L)



IP Result of anti-PSAT1

(IP:10501-1-AP, 3µg;

### Background

PSAT1, also named as PSA and PSAT, belongs to the class-V pyridoxal-phosphate-dependent aminotransferase family and SerC subfamily. It Catalyzes the reversible conversion of 3-phosphohydroxypyruvate to phosphoserine and of 3-hydroxy-2-oxo-4-phosphonooxybutanoate to phosphohydroxythreonine. PSAT1 represents a new interesting target for CRC therapy. (PMID:18221502) It may be implicated in altered serine metabolism and schizophrenia spectrum conditions. (PMID:20955740 )

### Applications

Tested applications:	ELISA, IHC, WB, IP, IF
Cited applications:	IHC, WB
Species specificity:	Human, Rat; other species not tested.
Cited species:	Human
Calculated PSAT1 MW:	40 kDa
Observed PSAT1 MW:	37-40 kDa
Positive WB detected in	HepG2 cells, HEK-293 cells, HeLa cells, rat brain tissue
Positive IP detected in	HeLa cells
Positive IHC detected in	Human pancreas cancer tissue, human colon cancer tissue
Positive IF detected in	HepG2 cells
Recommended dilution:	WB: 1:200-1:2000
	IP: 1:200-1:1000
	IHC: 1:10-1:100
	IF: 1:20-1:200

Application key: WB = Western blotting, IHC = Immunohistochemistry, IF = Immunofluorescence, IP = Immunoprecipitation

### Immunogen information

Immunogen:	Ag0776
GenBank accession number:	BC004863
Gene ID (NCBI):	29968
Full name:	Phosphoserine aminotransferase 1

### Product information

Purification method:	Antigen affinity purification
Storage:	PBS with 0.1% sodium azide and 50% glycerol pH 7.3. Store at -20°C.

Detection:10501-1-AP 1:300)  
with HeLa cells lysate 2480ug.