

NELFE Polyclonal Antibody

Catalog number: 10705-1-AP

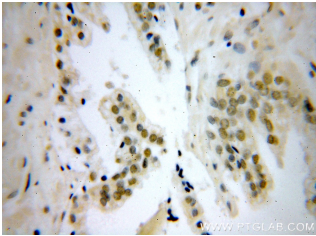
Size: 30 µg/150 µl

Source: Rabbit

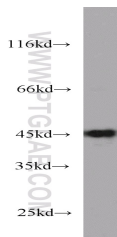
Isotype: IgG

Synonyms:

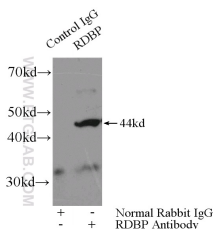
RDBP; D6S45, Negative elongation factor E, NELF E, NELFE, RD, RD RNA binding protein, RDBP, RDP, RNA binding protein RD



Immunohistochemical of paraffin-embedded human prostate cancer using 10705-1-AP (RDBP antibody) at dilution of 1:100 (under 40x lens)



HEK-293 cells were subjected to SDS PAGE followed by western blot with 10705-1-AP (RDBP antibody) at dilution of 1:1000



IP Result of anti-RDBP (IP:10705-1-AP, 4µg; Detection:10705-1-AP 1:800) with mouse brain tissue lysate 4680µg.

Background

RDBP, also named as NELF-E and RD, belongs to the RRM NELF-E family. It is an essential component of the NELF complex which is a complex that negatively regulates the elongation of transcription by RNA polymerase II. The NELF complex, a complex acts via an association with the DSIF complex and causes transcriptional pausing, is counteracted by the P-TEFb kinase complex. RDBP was recently found implicated in RNA polymerase II pausing by association with Hsp90. Catalog# 10705-1-AP is a widely used rabbit polyclonal antibody obtained by immunizing animals with full-length RDBP of human origin.

Applications

Tested applications:	ELISA, WB, IHC, IP
Cited applications:	ChIP, IHC, WB
Species specificity:	Human, Mouse, Rat; other species not tested.
Cited species:	Human, mouse
Calculated NELFE MW:	37 kDa, 43 kDa
Observed NELFE MW:	44kd
Positive WB detected in	HEK-293 cells, HeLa cells, mouse brain tissue, mouse eye tissue, mouse placenta tissue, rat brain tissue
Positive IP detected in	Mouse brain tissue
Positive IHC detected in	Human prostate cancer tissue
Recommended dilution:	WB: 1:500-1:5000 IP: 1:200-1:2000 IHC: 1:20-1:200

Application key: WB = Western blotting, IHC = Immunohistochemistry, IF = Immunofluorescence, IP = Immunoprecipitation

Immunogen information

Immunogen:	Ag1186
GenBank accession number:	BC011600
Gene ID (NCBI):	7936
Full name:	RD RNA binding protein

Product information

Purification method:	Antigen affinity purification
Storage:	PBS with 0.1% sodium azide and 50% glycerol pH 7.3. Store at -20°C.