

CPSF1 Polyclonal Antibody

Catalog number: 11031-1-AP

Size: 22 µg/150 µl

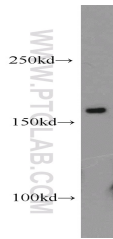
Source: Rabbit

Isotype: IgG

Synonyms:

CPSF1; CPSF160; HSU37012;

P/cl.18



Jurkat cells were subjected to SDS PAGE followed by western blot with 11031-1-AP(CPSF1 Antibody) at dilution of 1:500

Applications

| | |
|--------------------------|--|
| Tested applications: | ELISA, WB |
| Species specificity: | Human, mouse, rat; other species not tested. |
| Positive WB detected in: | Jurkat cells, HeLa cells, human brain tissue |
| Calculated CPSF1 MW: | 160kd |
| Observed CPSF1 MW: | 160kd |
| Recommended dilution: | WB: 1:200-1:2000 |

Application key: WB = Western blotting, IHC = Immunohistochemistry, IF = Immunofluorescence, IP = Immunoprecipitation, FC = Flow cytometry

Immunogen information

| | |
|---------------------------|--|
| Immunogen: | Ag1489 |
| GenBank accession number: | BC017232 |
| Gene ID (NCBI): | 29894 |
| Full name: | Cleavage and polyadenylation specific factor 1, 160kDa |

Product information

| | |
|----------------------|---|
| Purification method: | Antigen affinity purification |
| Storage: | PBS with 0.1% sodium azide and 50% glycerol pH 7.3. Store at -20°C. |