

## BBS7 Polyclonal Antibody

Catalog number: 13458-1-AP

Size: 20 µg/150 µl

Source: Rabbit

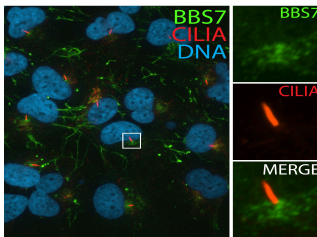
Isotype: IgG

Synonyms:

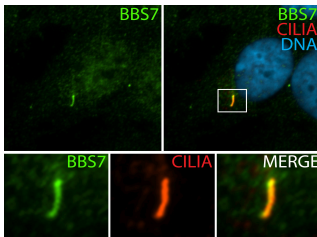
BBS7; Bardet Biedl syndrome 7,

BBS2 like protein 1, BBS2L1,

BBS7, FLJ10715



IF result (pericentriolar staining) of anti-BBS7 (13458-1-AP, 1:50) with serum-starved hTERT-RPE1 by Dr. Moshe Kim.



IF result (along the length of cilia stain) of anti-BBS7 (13458-1-AP) with serum-starved hTERT-RPE1 cells (1% PFA fixed) by Dr. Moshe Kim.

### Applications

Tested applications:	ELISA, IF
Species specificity:	Human, Mouse, Rat; other species not tested.
Calculated BBS7 MW:	715aa, 80 kDa
Observed BBS7 MW:	
Positive IF detected in:	HTERT-RPE1 cells
Application note:	18961-1-AP is suggested for WB and IHC; 13458-1-AP is suggested for IF
Recommended dilution:	IF: 1:20-1:200

Application key: WB = Western blotting, IHC = Immunohistochemistry, IF = Immunofluorescence, IP = Immunoprecipitation

### Immunogen information

Immunogen:	Ag4314
GenBank accession number:	BC032691
Gene ID (NCBI):	55212
Full name:	Bardet-Biedl syndrome 7

### Product information

Purification method:	Antigen affinity purification
Storage:	PBS with 0.1% sodium azide and 50% glycerol pH 7.3. Store at -20°C.