

## SORBS1 Polyclonal Antibody

Catalog number: 13854-1-AP

Size: 58 µg/150 µl

Source: Rabbit

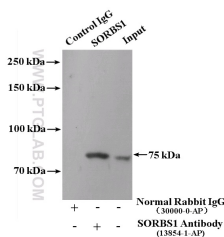
Isotype: IgG

Synonyms:

SORBS1; c Cbl associated protein, CAP, DKFZp451C066, DKFZp586P1422, FLAF2, FLJ12406, KIAA0894, KIAA1296, Ponsin, R85FL, SH3 domain protein 5, SH3D5, SH3P12, SORB1, SORBS1



3T3-L1 cells were subjected to SDS PAGE followed by western blot with 13854-1-AP(SORBS1 antibody) at dilution of 1:800



IP Result of anti-SORBS1 (IP:13854-1-AP, 4µg; Detection:13854-1-AP 1:800) with mouse liver tissue lysate 4800µg.

### Applications

Tested applications:	ELISA, WB, IP
Species specificity:	Human, Mouse; other species not tested.
Calculated SORBS1 MW:	1292aa,142 kDa
Observed SORBS1 MW:	70-75 kDa
Positive WB detected in	3T3-L1 cells, HEK-293 cells, mouse kidney tissue, mouse liver tissue
Positive IP detected in	Mouse liver tissue
Recommended dilution:	WB: 1:200-1:2000 IP: 1:200-1:2000

Application key: WB = Western blotting, IHC = Immunohistochemistry, IF = Immunofluorescence, IP = Immunoprecipitation

### Immunogen information

Immunogen:	Ag4828
GenBank accession number:	BC042612
Gene ID (NCBI):	10580
Full name:	Sorbin and SH3 domain containing 1

### Product information

Purification method:	Antigen affinity purification
Storage:	PBS with 0.1% sodium azide and 50% glycerol pH 7.3. Store at -20°C.