

PDCD6 Polyclonal Antibody

Catalog number: 12303-1-AP

Size: 55 µg/150 µl

Source: Rabbit

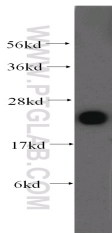
Isotype: IgG

Synonyms:

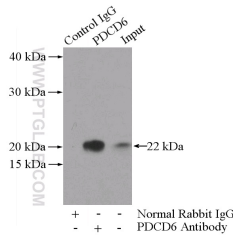
PDCD6; ALG 2, ALG2, FLJ46208,

PDCD6, PEF1B, programmed

cell death 6



HeLa cells were subjected to SDS PAGE followed by western blot with 12303-1-AP (PDCD6 antibody) at dilution of 1:500



IP Result of anti-PDCD6 (IP:12303-1-AP, 3µg; Detection:12303-1-AP 1:500) with HeLa cells lysate 3200µg.

Applications

Tested applications:	ELISA, WB, IP
Cited applications:	WB
Species specificity:	Human, Mouse, Rat; other species not tested.
Cited species:	Human
Calculated PDCD6 MW:	191aa, 22 kDa
Observed PDCD6 MW:	22 kDa
Positive WB detected in:	HeLa cells, HEK-293 cells, Jurkat cells, K-562 cells
Positive IP detected in:	HeLa cells
Recommended dilution:	WB: 1:500-1:5000 IP: 1:200-1:2000

Application key: WB = Western blotting, IHC = Immunohistochemistry, IF = Immunofluorescence, IP = Immunoprecipitation

Immunogen information

Immunogen:	Ag2949
GenBank accession number:	BC012384
Gene ID (NCBI):	10016
Full name:	Programmed cell death 6

Product information

Purification method:	Antigen affinity purification
Storage:	PBS with 0.1% sodium azide and 50% glycerol pH 7.3. Store at -20°C.