

DSS1 Polyclonal Antibody

Catalog number: 13639-1-AP

Size: 48 µg/150 µl

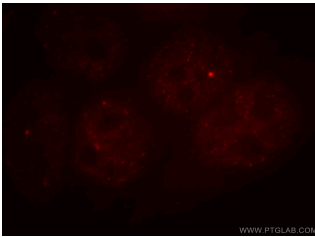
Source: Rabbit

Isotype: IgG

Synonyms:

SHFM1; DSS1, ECD, SEM1,

SHFD1, Shfdg1, SHFM1, SHSF1



Immunofluorescent analysis of HeLa cells, using SHFM1 antibody 13639-1-AP at 1:25 dilution and Rhodamine-labeled goat anti-rabbit IgG (red).



HeLa cells were subjected to SDS PAGE followed by western blot with 13639-1-AP (SHFM1 antibody) at dilution of 1:300

Applications

Tested applications:	ELISA, WB, IF
Cited applications:	IF, WB
Species specificity:	Human; other species not tested.
Cited species:	Human
Calculated DSS1 MW:	70aa, 8 kDa
Observed DSS1 MW:	8-10 kDa
Positive WB detected in:	HeLa cells
Positive IF detected in:	HeLa cells
Recommended dilution:	WB: 1:200-1:2000 IF: 1:10-1:100

Application key: WB = Western blotting, IHC = Immunohistochemistry, IF = Immunofluorescence, IP = Immunoprecipitation

Immunogen information

Immunogen:	Ag4573
GenBank accession number:	BC032782
Gene ID (NCBI):	7979
Full name:	Split hand/foot malformation (ectrodactyly) type 1

Product information

Purification method:	Antigen affinity purification
Storage:	PBS with 0.02% sodium azide and 50% glycerol pH 7.3. Store at -20°C.