

## KIF4A Polyclonal Antibody

Catalog number: 14344-1-AP

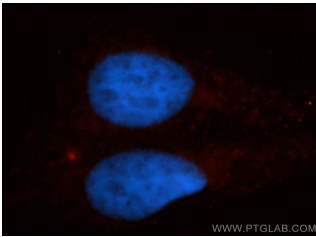
Size: 20 µg/150 µl

Source: Rabbit

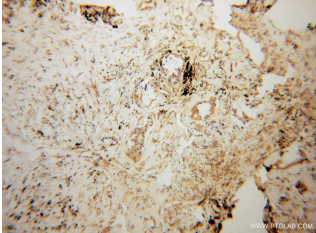
Isotype: IgG

Synonyms:

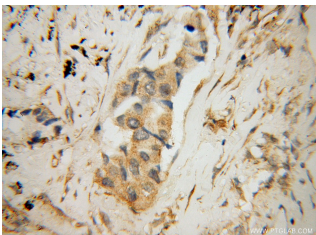
KIF4A; KIF4A, Chromokinesin  
A, FLJ12530, FLJ12655,  
FLJ14204



Immunofluorescent analysis of HepG2 cells, using KIF4A antibody 14344-1-AP at 1:50 dilution and Rhodamine-labeled goat anti-rabbit IgG (red). Blue pseudocolor = DAPI (fluorescent DNA dye).



Immunohistochemical of paraffin-embedded human lung cancer using 14344-1-AP (KIF4A antibody) at dilution of 1:50 (under 10x lens)



Immunohistochemical of paraffin-embedded human lung cancer using 14344-1-AP (KIF4A antibody) at dilution of 1:50 (under 40x lens)

### Applications

Tested applications:	ELISA, IHC, IF
Species specificity:	Human, mouse, rat; other species not tested.
Calculated KIF4A MW:	140 kDa
Observed KIF4A MW:	
Positive IHC detected in	Human lung cancer
Positive IF detected in	HepG2
Recommended dilution:	IHC: 1:20-1:200 IF: 1:20-1:200

Application key: WB = Western blotting, IHC = Immunohistochemistry, IF = Immunofluorescence, IP = Immunoprecipitation

### Immunogen information

Immunogen:	Ag5682
GenBank accession number:	BC050548
Gene ID (NCBI):	24137
Full name:	Kinesin family member 4A

### Product information

Purification method:	Antigen affinity purification
Storage:	PBS with 0.02% sodium azide and 50% glycerol pH 7.3. Store at -20°C.