

## PRUNE2 Polyclonal Antibody

Catalog number: 11458-1-AP

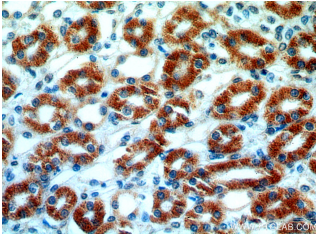
Size: 39 µg/150 µl

Source: Rabbit

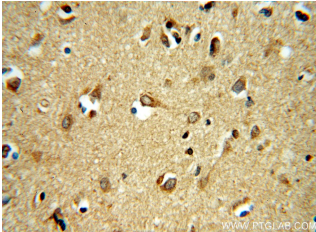
Isotype: IgG

Synonyms:

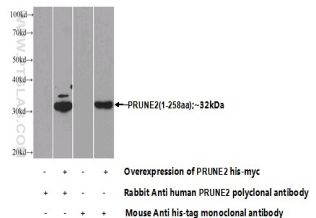
PRUNE2; A214N16.3,  
bA214N16.3, BMCC1, BNIPXL,  
C9orf65, DKFZp762K117,  
FLJ50060, FLJ54876, FLJ59118,  
KIAA0367, Protein prune  
homolog 2, prune homolog 2  
(Drosophila), PRUNE2, RP11  
58J3.2



Immunohistochemical of paraffin-embedded human kidney using 11458-1-AP (PRUNE2 antibody) at dilution of 1:50 (under 40x lens)



Immunohistochemical of paraffin-embedded human brain using 11458-1-AP (PRUNE2 antibody) at dilution of 1:50 (under 40x lens)



Transfected HEK-293 cells were subjected to SDS PAGE followed by western blot with 11458-1-AP (PRUNE2 Antibody) at dilution of 1:1000

### Background

PRUNE2 gene, also named BMCC1, encodes protein prune homolog 2. PRUNE2 gene are overlapping with PCA3, one of the most prostate cancer specific markers. PRUNE2 may play an important role in regulating differentiation, survival and aggressiveness of the tumor cells. Besides its high level of expression seen in the nervous system (brain, cerebellum and spinal cord), it is also expressed at high levels in noneuroblastoma, rhabdomyosarcoma, melanoma and some osteosarcoma cell lines, whereas at only low levels in cancer cell lines of liver, breast, thyroid and colon. The Calculated molecular weight of this protein is 340 kDa. Our antibody specifically recognises the 140-150 kDa band which is an isoform or cleaved fragment of PRUNE2 (PMID:21234814).

### Applications

Tested applications:	ELISA, IHC, WB
Cited applications:	IHC, WB
Species specificity:	Human, Mouse, Rat; other species not tested.
Cited species:	Human
Calculated PRUNE2 MW:	341 kDa
Observed PRUNE2 MW:	140~150 kDa
Positive WB detected in	Human placenta tissue, mouse brain tissue, mouse testis tissue, rat brain tissue, SH-SY5Y cells, Transfected HEK-293 cells
Positive IHC detected in	Human kidney tissue, human brain tissue, human prostate cancer tissue
Recommended dilution:	WB: 1:200-1:2000 IHC: 1:20-1:200

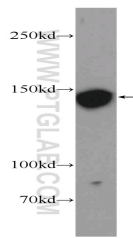
Application key: WB = Western blotting, IHC = Immunohistochemistry, IF = Immunofluorescence, IP = Immunoprecipitation

### Immunogen information

Immunogen:	Ag2025
GenBank accession number:	BC019095
Gene ID (NCBI):	158471
Full name:	Prune homolog 2 (Drosophila)

### Product information

Purification method:	Antigen affinity purification
Storage:	PBS with 0.1% sodium azide and 50% glycerol pH 7.3. Store at -20°C.



human placenta tissue were  
subjected to SDS PAGE  
followed by western blot with  
11458-1-AP( PRUNE2  
Antibody) at dilution of 1:500