

MIER1 Polyclonal Antibody

Catalog number: 11452-1-AP

Size: 66 µg/150 µl

Source: Rabbit

Isotype: IgG

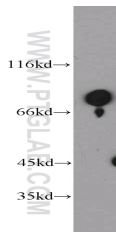
Synonyms:

MIER1; DKFZp781G0451, Early

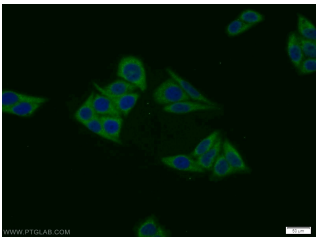
response 1, ER1, hMI ER1,

KIAA1610, MI ER1, MIER1, RP5

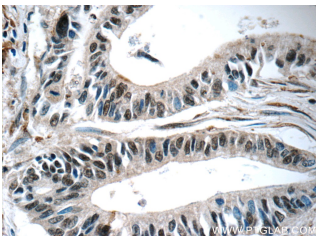
944N15.1



human testis tissue were subjected to SDS PAGE followed by western blot with 11452-1-AP(MIER1 antibody) at dilution of 1:500



Immunofluorescent analysis of HepG2 cells using 11452-1-AP(MIER1 Antibody) at dilution of 1:25 and Alexa Fluor 488-conjugated AffiniPure Goat Anti-Rabbit IgG(H+L)



Immunohistochemistry of paraffin-embedded human pancreas cancer tissue slide using 11452-1-AP(MIER1 Antibody) at dilution of 1:50 (under 40x lens)

Applications

Tested applications:

ELISA, WB, IHC, IF

Species specificity:

Human,Mouse,Rat; other species not tested.

Calculated MIER1 MW:

536aa,61 kDa

Observed MIER1 MW:

82 kDa

Positive WB detected in

Human testis tissue, HepG2 cells, mouse heart tissue

Positive IHC detected in

Human pancreas cancer tissue

Positive IF detected in

HepG2 cells

Recommended dilution:

WB: 1:1000-1:10000

IHC: 1:20-1:200

IF: 1:10-1:100

Application key: WB = Western blotting, IHC= Immunohistochemistry, IF= Immunofluorescence, IP= Immunoprecipitation

Immunogen information

Immunogen:

Ag2010

GenBank accession number:

BC017423

Gene ID (NCBI):

57708

Full name:

Mesoderm induction early response 1 homolog (Xenopus laevis)

Product information

Purification method:

Antigen affinity purification

Storage:

PBS with 0.02% sodium azide and 50% glycerol pH 7.3. Store at -20°C.