

PALB2 Polyclonal Antibody

Catalog number: 14340-1-AP

Size: 20 µg/150 µl

Source: Rabbit

Isotype: IgG

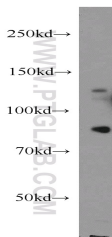
Synonyms:

PALB2; DKFZp667I166,

DKFZp686E1054, FANCN,

FLJ21816, PALB2, partner and

localizer of BRCA2



HeLa cells were subjected to SDS PAGE followed by western blot with 14340-1-AP (PALB2 antibody) at dilution of 1:500

Applications

Tested applications:	ELISA, WB
Species specificity:	Human, Mouse, Rat; other species not tested.
Calculated PALB2 MW:	131kd
Observed PALB2 MW:	130kd
Positive WB detected in	HeLa cells
Recommended dilution:	WB: 1:200-1:2000

Application key: WB = Western blotting, IHC = Immunohistochemistry, IF = Immunofluorescence, IP = Immunoprecipitation

Immunogen information

Immunogen:	Ag5654
GenBank accession number:	BC044254
Gene ID (NCBI):	79728
Full name:	Partner and localizer of BRCA2

Product information

Purification method:	Antigen affinity purification
Storage:	PBS with 0.02% sodium azide and 50% glycerol pH 7.3. Store at -20°C.