

BAF170 Polyclonal Antibody

Catalog number: 12018-1-AP

Size: 111 µg/150 µl

Source: Rabbit

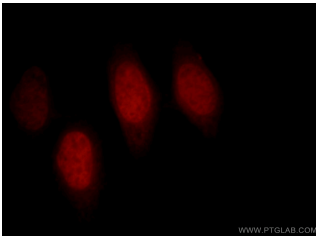
Isotype: IgG

Synonyms:

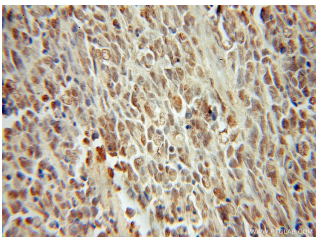
SMARCC2; BAF170, BRG1

associated factor 170, CRACC2,

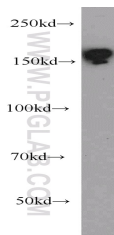
Rsc8, SMARCC2



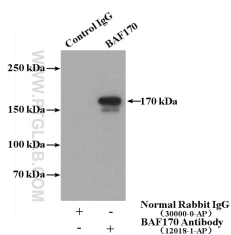
Immunofluorescent analysis of HepG2 cells, using SMARCC2 antibody 12018-1-AP at 1:25 dilution and Rhodamine-labeled goat anti-rabbit IgG (red).



Immunohistochemical of paraffin-embedded human medulloblastoma using 12018-1-AP(SMARCC2 antibody) at dilution of 1:50 (under 10x lens)



HeLa cells were subjected to SDS PAGE followed by western blot with 12018-1-AP(SMARCC2 antibody) at dilution of 1:500



IP Result of anti-BAF170

Applications

Tested applications:	ELISA, WB, IHC, IF, IP
Species specificity:	Human, Mouse, Rat; other species not tested.
Calculated BAF170 MW:	1214aa, 132 kDa
Observed BAF170 MW:	170 kDa
Positive WB detected in	HeLa cells, A431 cells
Positive IP detected in	HeLa cells
Positive IHC detected in	Human medulloblastoma tissue
Positive IF detected in	HepG2 cells
Recommended dilution:	WB: 1:200-1:2000 IP: 1:200-1:2000 IHC: 1:20-1:200 IF: 1:10-1:100

Application key: WB = Western blotting, IHC = Immunohistochemistry, IF = Immunofluorescence, IP = Immunoprecipitation

Immunogen information

Immunogen:	Ag2634
GenBank accession number:	BC013045
Gene ID (NCBI):	6601
Full name:	SWI/SNF related, matrix associated, actin dependent regulator of chromatin, subfamily c, member 2

Product information

Purification method:	Antigen affinity purification
Storage:	PBS with 0.1% sodium azide and 50% glycerol pH 7.3. Store at -20°C.

(IP:12018-1-AP, 4ug;
Detection:12018-1-AP 1:700)
with HeLa cells lysate 3200ug.