

RAB6A Polyclonal Antibody

Catalog number: 10187-2-AP

Size: 20 µg/150 µl

Source: Rabbit

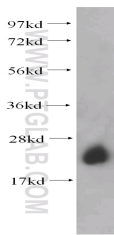
Isotype: IgG

Synonyms:

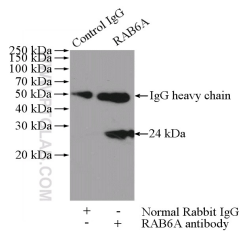
RAB6A; Rab 6, RAB6, RAB6A,

RAB6A', RAB6B, Ras related

protein Rab 6A



mouse brain tissue were subjected to SDS PAGE followed by western blot with 10187-2-AP(RAB6A antibody) at dilution of 1:500



IP Result of anti-RAB6A (IP:10187-2-AP, 4µg; Detection:10187-2-AP 1:500) with mouse brain tissue lysate 2640ug.

Background

Members of the Rab subfamily of small GTPases play an important role in the regulation of intracellular transport routes. Rab6, localized to the Golgi apparatus, has been shown to be a regulator of membrane traffic from the Golgi apparatus towards the endoplasmic reticulum (ER). The expression of Rab6 is ubiquitous.

Applications

Tested applications:	ELISA, WB, IP
Species specificity:	Human, Mouse; other species not tested.
Calculated RAB6A MW:	24 kDa
Observed RAB6A MW:	24 kDa
Positive WB detected in	Mouse brain tissue
Positive IP detected in	Mouse brain tissue
Recommended dilution:	WB: 1:200-1:2000 IP: 1:200-1:2000

Application key: WB = Western blotting, IHC = Immunohistochemistry, IF = Immunofluorescence, IP = Immunoprecipitation

Immunogen information

Immunogen:	Ag0240
GenBank accession number:	BC003617
Gene ID (NCBI):	5870
Full name:	RAB6A, member RAS oncogene family

Product information

Purification method:	Antigen affinity purification
Storage:	PBS with 0.1% sodium azide and 50% glycerol pH 7.3. Store at -20°C.