

RTF1 Polyclonal Antibody

Catalog number: 12170-1-AP

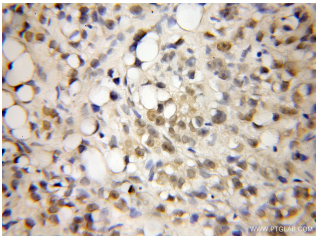
Size: 20 µg/150 µl

Source: Rabbit

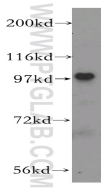
Isotype: IgG

Synonyms:

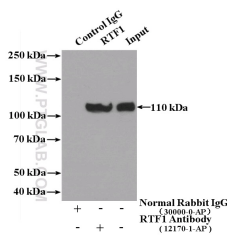
RTF1; CDG1N, GTL7, KIAA0252, RTF1



Immunohistochemical of paraffin-embedded human prostate cancer using 12170-1-AP (RTF1 antibody) at dilution of 1:50 (under 10x lens)



HeLa cells were subjected to SDS PAGE followed by western blot with 12170-1-AP (RTF1 antibody) at dilution of 1:300



IP Result of anti-RTF1 (IP:12170-1-AP, 4ug; Detection:12170-1-AP 1:500) with HeLa cells lysate 2400ug.

Applications

Tested applications:	ELISA, WB, IHC, IP
Species specificity:	Human, Mouse, Rat; other species not tested.
Calculated RTF1 MW:	585aa, 67 kDa; 710aa, 80 kDa
Observed RTF1 MW:	100 kDa
Positive WB detected in:	HeLa cells, HEK-293 cells, MCF7 cells
Positive IP detected in:	HeLa cells
Positive IHC detected in:	Human prostate cancer tissue
Recommended dilution:	WB: 1:200-1:2000
	IP: 1:200-1:2000
	IHC: 1:20-1:200

Application key: WB = Western blotting, IHC = Immunohistochemistry, IF = Immunofluorescence, IP = Immunoprecipitation

Immunogen information

Immunogen:	Ag2812
GenBank accession number:	BC015052
Gene ID (NCBI):	23168
Full name:	Rtf1, Paf1/RNA polymerase II complex component, homolog (S. cerevisiae)

Product information

Purification method:	Antigen affinity purification
Storage:	PBS with 0.02% sodium azide and 50% glycerol pH 7.3. Store at -20°C.