

GALE Polyclonal Antibody

Catalog number: 14414-1-AP

Size: 29 µg/150 µl

Source: Rabbit

Isotype: IgG

Synonyms:

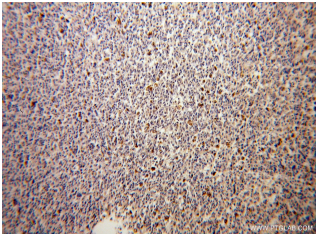
GALE; FLJ95174, FLJ97302,

Galactowaldenase, GALE,

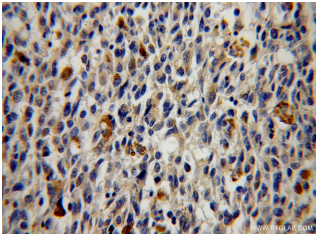
SDR1E1, UDP glucose 4

epimerase, UDP-galactose-4-

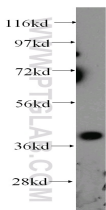
epimerase



Immunohistochemical of paraffin-embedded human malignant melanoma using 14414-1-AP(GALE antibody) at dilution of 1:100 (under 10x lens)



Immunohistochemical of paraffin-embedded human malignant melanoma using 14414-1-AP(GALE antibody) at dilution of 1:100 (under 40x lens)



A375 cells were subjected to SDS PAGE followed by western blot with 14414-1-AP(GALE antibody) at dilution of 1:300

Background

GALE(Galactowaldenase) is also named as UDP-glucose 4-epimerase, UDP-galactose 4-epimerase, and belongs to the sugar epimerase family. UDP-galactose 4-epimerase catalyzes the interconversion of UDP-glucose and UDP-galactose during normal galactose metabolism. In humans, deficiencies in this enzyme lead to the complex disorder referred to as epimerase-deficiency galactosemia(PMID:10801319).It can exist as a homodimer(PMID:8931134).

Applications

Tested applications:	ELISA, WB, IHC, IP
Cited applications:	IHC, WB
Species specificity:	Human,Mouse,Rat; other species not tested.
Cited species:	Human
Calculated GALE MW:	38 kDa
Observed GALE MW:	38 kDa
Positive WB detected in	A375 cells, HeLa cells, MCF7 cells
Positive IP detected in	HeLa cells
Positive IHC detected in	Human malignant melanoma tissue
Recommended dilution:	WB: 1:200-1:1000
	IP: 1:200-1:1000
	IHC: 1:20-1:200

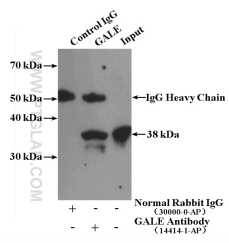
Application key: WB = Western blotting, IHC = Immunohistochemistry, IF = Immunofluorescence, IP = Immunoprecipitation

Immunogen information

Immunogen:	Ag5756
GenBank accession number:	BC050685
Gene ID (NCBI):	2582
Full name:	UDP-galactose-4-epimerase

Product information

Purification method:	Antigen affinity purification
Storage:	PBS with 0.02% sodium azide and 50% glycerol pH 7.3. Store at -20°C.



IP Result of anti-GALE
(IP:14414-1-AP, 4ug;
Detection:14414-1-AP 1:300)
with HeLa cells lysate 1080ug.