

## EXOC6 Polyclonal Antibody

Catalog number: 12723-1-AP

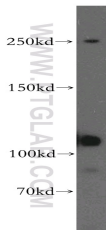
Size: 20 µg/150 µl

Source: Rabbit

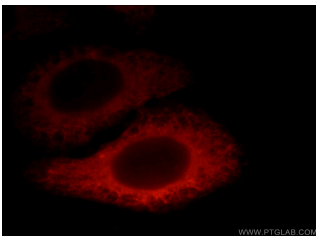
Isotype: IgG

Synonyms:

EXOC6; DKFZp761I2124,  
EXOC6, EXOC6A, exocyst  
complex component 6, FLJ1125,  
FLJ11251, SEC15, SEC15 like  
protein 1, SEC15A, SEC15L,  
SEC15L1, SEC15L3, Sec15p



human testis tissue were subjected to SDS PAGE followed by western blot with 12723-1-AP(EXOC6 antibody) at dilution of 1:300



Immunofluorescent analysis of HepG2 cells, using EXOC6 antibody 12723-1-AP at 1:25 dilution and Rhodamine-labeled goat anti-rabbit IgG (red).

### Applications

Tested applications:	ELISA, WB, IF
Cited applications:	IF, WB
Species specificity:	Human, Mouse, Rat; other species not tested.
Cited species:	Human
Calculated EXOC6 MW:	804aa, 94 kDa
Observed EXOC6 MW:	116 kDa
Positive WB detected in	Human testis tissue
Positive IF detected in	HepG2 cells
Recommended dilution:	WB: 1:500-1:5000 IF: 1:10-1:100

Application key: WB = Western blotting, IHC = Immunohistochemistry, IF = Immunofluorescence, IP = Immunoprecipitation

### Immunogen information

Immunogen:	Ag3418
GenBank accession number:	BC028395
Gene ID (NCBI):	54536
Full name:	Exocyst complex component 6

### Product information

Purification method:	Antigen affinity purification
Storage:	PBS with 0.02% sodium azide and 50% glycerol pH 7.3. Store at -20°C.