

STK38L Polyclonal Antibody

Catalog number: 12697-1-AP

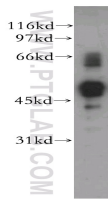
Size: 20 µg/150 µl

Source: Rabbit

Isotype: IgG

Synonyms:

STK38L; KIAA0965; NDR2



A375 cells were subjected to SDS PAGE followed by western blot with 12697-1-AP(STK38L Antibody) at dilution of 1:800

Applications

Tested applications:	ELISA, WB
Species specificity:	Human, mouse, rat; other species not tested.
Positive WB detected in:	A375 cells, HepG2 cells
Calculated STK38L MW:	464aa,54kd
Observed STK38L MW:	54kd
Recommended dilution:	WB: 1:200-1:2000

Application key: WB = Western blotting, IHC = Immunohistochemistry, IF = Immunofluorescence, IP = Immunoprecipitation, FC = Flow cytometry

Immunogen information

Immunogen:	Ag3413
GenBank accession number:	BC028603
Gene ID (NCBI):	23012
Full name:	Serine/threonine kinase 38 like

Product information

Purification method:	Antigen affinity purification
Storage:	PBS with 0.02% sodium azide and 50% glycerol pH 7.3. Store at -20°C.