

FKBP2 Polyclonal Antibody

Catalog number: 11700-1-AP

Size: 20 µg/150 µl

Source: Rabbit

Isotype: IgG

Synonyms:

FKBP2; 13 kDa FK506 binding protein, 13 kDa FKBP, FK506

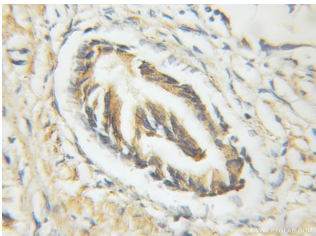
binding protein 2, FK506

binding protein 2, 13kDa, FKBP

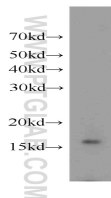
13, FKBP 2, FKBP13, FKBP2,

Immunophilin FKBP13, PPIase,

PPIase FKBP2, Rotamase



Immunohistochemical of paraffin-embedded human prostate cancer using 11700-1-AP (FKBP2 antibody) at dilution of 1:50 (under 10x lens)



mouse cerebellum tissue were subjected to SDS PAGE followed by western blot with 11700-1-AP (FKBP2 antibody) at dilution of 1:500

Background

FKBP2 is also named as FKBP13 and belongs to the FKBP-type PPIase family. It catalyzes the cis-trans isomerization of proline imidic peptide bonds in oligopeptides. FKBP2 has a 21-amino acid signal peptide and appears to be membrane-associated (PMID:1713687). It is localized to the lumen of the endoplasmic reticulum (ER). FKBP12 and FKBP13 are highly similar proteins, of molecular masses 12 kDa and 13 kDa respectively, with approx.43 % amino acid identity. The strong homology between FKBP12 and FKBP13 suggests that they may share similar biological functions, although, apart from rotamase activity, details relating to the function of either protein are scant (PMID:8373365).

Applications

Tested applications:	ELISA, IHC, WB
Species specificity:	Human, Mouse, Rat; other species not tested.
Calculated FKBP2 MW:	142aa, 16kd
Observed FKBP2 MW:	16kd
Positive WB detected in	Mouse cerebellum tissue, MCF7 cells
Positive IHC detected in	Human prostate cancer tissue
Recommended dilution:	WB: 1:200-1:2000 IHC: 1:20-1:200

Application key: WB = Western blotting, IHC = Immunohistochemistry, IF = Immunofluorescence, IP = Immunoprecipitation

Immunogen information

Immunogen:	Ag2255
GenBank accession number:	BC003384
Gene ID (NCBI):	2286
Full name:	FK506 binding protein 2, 13kDa

Product information

Purification method:	Antigen affinity purification
Storage:	PBS with 0.1% sodium azide and 50% glycerol pH 7.3. Store at -20°C.