

## MIPOL1 Polyclonal Antibody

Catalog number: 14158-1-AP

Size: 40 µg/150 µl

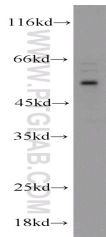
Source: Rabbit

Isotype: IgG

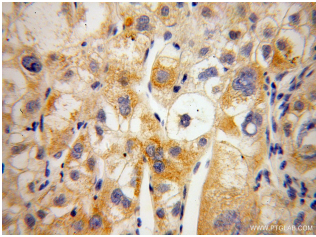
Synonyms:

MIPOL1; DKFZp313M2036;

MGC34010



HepG2 cells were subjected to SDS PAGE followed by western blot with 14158-1-AP(MIPOL1 Antibody) at dilution of 1:800



Immunohistochemistry of paraffin-embedded human liver cancer using 14158-1-AP(MIPOL1 Antibody) at Dilution 1:100 (under 40x lens)

### Applications

|                           |                                     |
|---------------------------|-------------------------------------|
| Tested applications:      | ELISA, WB, IHC                      |
| Species specificity:      | Human; other species not tested.    |
| Positive WB detected in:  | HepG2 cells                         |
| Calculated MIPOL1 MW:     | 442aa,52kd                          |
| Observed MIPOL1 MW:       | 52 kDa                              |
| Positive IHC detected in: | Human liver cancer                  |
| Recommended dilution:     | WB: 1:200-1:2000<br>IHC: 1:50-1:200 |

Application key: WB = Western blotting, IHC = Immunohistochemistry, IF = Immunofluorescence, IP = Immunoprecipitation, FC = Flow cytometry

### Immunogen information

|                           |                            |
|---------------------------|----------------------------|
| Immunogen:                | Ag5340                     |
| GenBank accession number: | BC035870                   |
| Gene ID (NCBI):           | 145282                     |
| Full name:                | Mirror-image polydactyly 1 |

### Product information

|                      |  |
|----------------------|--|
| Purification method: | Antigen affinity purification  |
| Storage:             | PBS with 0.02% sodium azide and 50% glycerol pH 7.3. Store at -20°C. |